



INTERIOR DOOR FOCUS:

ARIA

Effortlessly elegant, fluted door designs

Inspired by the charm and versatility of fluted interior design, JB Kind's ARIA door range combines this contemporary theme to create a timeless and sophisticated door style.

These distinctive doors can be incorporated into various design styles, from modern, minimalist interiors to more traditional, classic settings.

- ✓ Fluted door design with full length vertical grooves
- ✓ Choice of finishes: laminate and white primed
- ✓ Semi-solid and solid core constructions
- ✓ FD30 fire door options
- ✓ Matching glazed partners



Our inspiration

Designers and homeowners are embracing the visually appealing contrast that fluted design offers and how it can serve as a focal point, adding texture and depth.

Wall panelling, furnishings and home accessories are following this trend, which has inspired the creation of a door design that complements this theme.

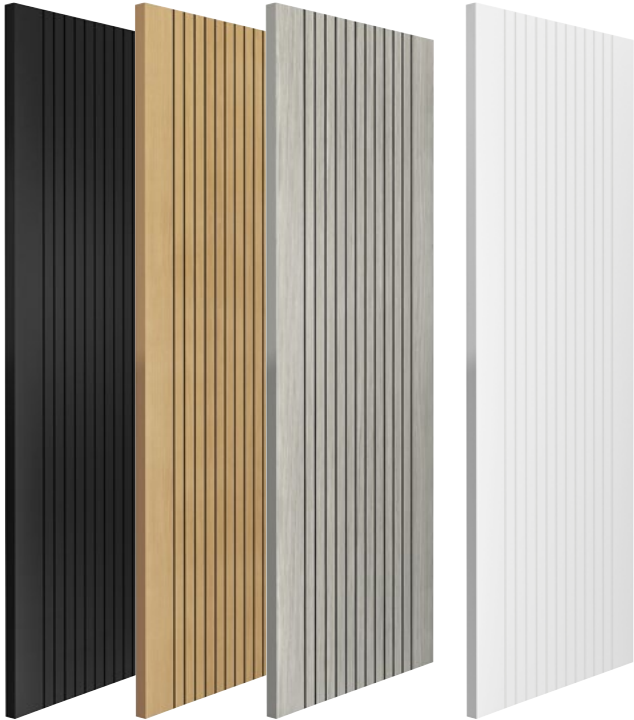


The Finish

Choose from three attractive laminate finishes, plus a white primed option that can be painted to suit individual styles.

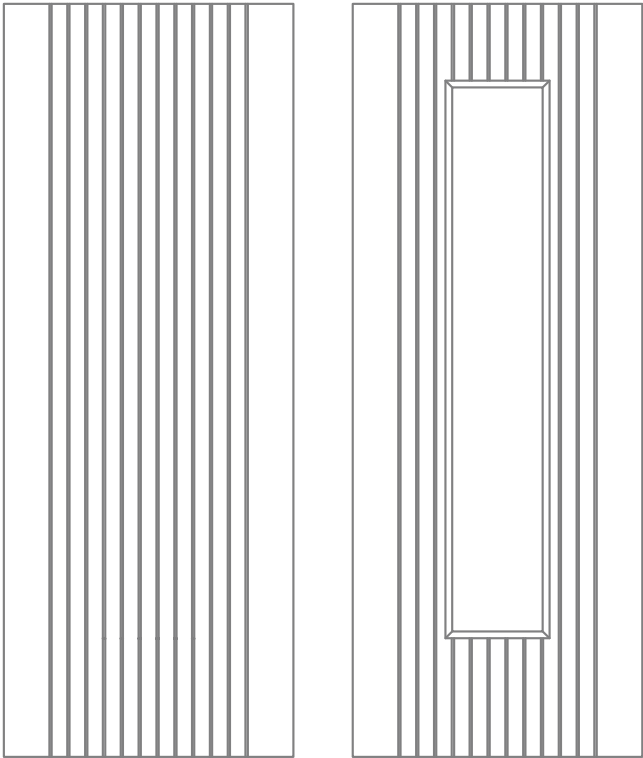
Laminates offer a robust and uniform finish, whether it is the subtle texture of the Aria Black or the realistic wood grain effect of the Aria Oak and Grey.

The striking black painted grooves really make a statement and are what make these doors stand apart from the rest.



The Style

Two vertical side rails set the frame for this contemporary door, embellished with a series of elegant, square grooves that run from top to bottom.



Construction

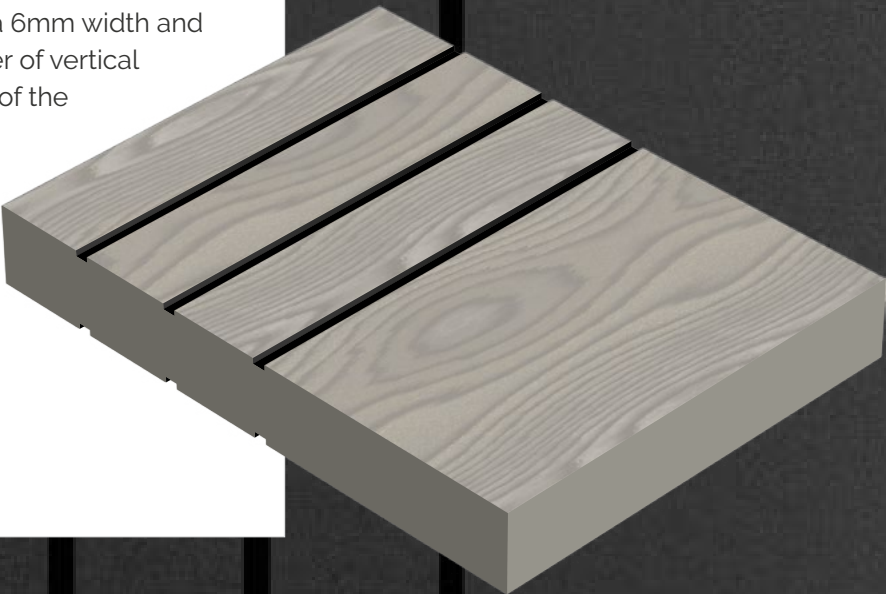
Laminates: standard 35mm doors are constructed with a semi-solid engineered core for added stability with a Continuous Pressure Laminate (CPL) layer on the face of the door. FD30 fire doors have a 44mm thickness with solid engineered cores. Door edges are painted and can be retouched if trimmed during fitting.

White primed: both standard 35mm and 44mm FD30 fire doors have a solid engineered core construction and are faced with MDF.

Grooves/flutes: are square shaped with a 6mm width and 2.5mm depth. Please note that the number of vertical grooves will vary depending on the width of the door chosen:

- 838mm - 14 grooves
- 762mm - 12 grooves
- 686mm - 10 grooves
- 610mm - 8 grooves.

All glazed doors are fitted with clear flat safety glass and raised beading. The glazing panel size is 1431mm (H) and 160mm (W) for all door widths.



ARIA BLACK

Confident urban style

The Aria Black's laminate finish has a subtle stippled texture which adds to the door's visual appeal, complemented perfectly by black painted grooves.

Semi-solid engineered core for added stability. FD30 fire doors have a solid engineered core.

Matching glazed partner has clear flat safety glass with raised beading.

FD30 Fire doors are available from stock.

If trimming is required, the door edges will need retouching. We recommend RAL 9005.



Aria Black

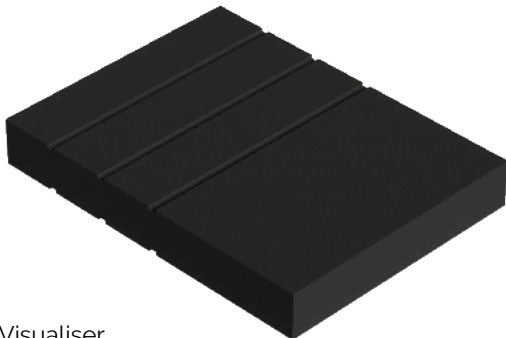


Size (mm)	Code
FINISHED	
1981 610 35	BARI20
1981 686 35	BARI23
1981 762 35	BARI26
1981 838 35	BARI29
1981 610 44	BARI20FD30 🔥
1981 686 44	BARI23FD30 🔥
1981 762 44	BARI26FD30 🔥
1981 838 44	BARI29FD30 🔥

Aria Black Glazed



Size (mm)	Code
FINISHED	
1981 610 35	BARI20G
1981 686 35	BARI23G
1981 762 35	BARI26G
1981 838 35	BARI29G



View in our Door Visualiser



ARIA OAK

Timeless appeal

The Aria Oak laminate finish looks like real wood grain and the contrasting black painted grooves really give this door a contemporary edge.

Semi-solid engineered core for added stability. FD30 fire doors have a solid engineered core.

Matching glazed partner has clear flat safety glass with raised beading.

FD30 Fire doors are available from stock.

If trimming is required, the door edges will need retouching. We recommend RAL 1011.



LAMINATE DOOR



Aria Oak

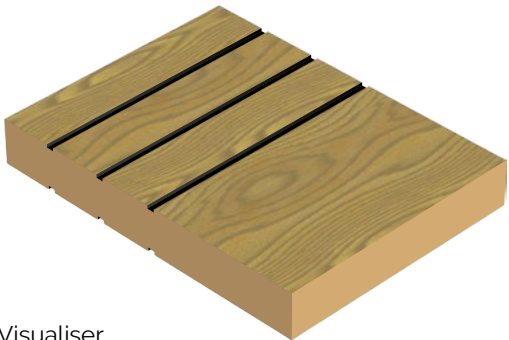


Aria Oak Glazed



Size (mm)	Code
FINISHED	
1981 610 35	OARI20
1981 686 35	OARI23
1981 762 35	OARI26
1981 838 35	OARI29
1981 610 44	OARI20FD30 🔥
1981 686 44	OARI23FD30 🔥
1981 762 44	OARI26FD30 🔥
1981 838 44	OARI29FD30 🔥

Size (mm)	Code
FINISHED	
1981 610 35	OARI20G
1981 686 35	OARI23G
1981 762 35	OARI26G
1981 838 35	OARI29G



View in our Door Visualiser

ARIA GREY

On-trend sophistication

The Aria Grey enjoys a light grey woodgrain effect laminate finish with contrasting black painted grooves, creating a modern statement door.

Semi-solid engineered core for added stability. FD30 fire doors have a solid engineered core.

Matching glazed partner has clear flat safety glass with raised beading.

FD30 Fire doors are available from stock.

If trimming is required, the door edges will need retouching. We recommend RAL 7030.



Aria Grey

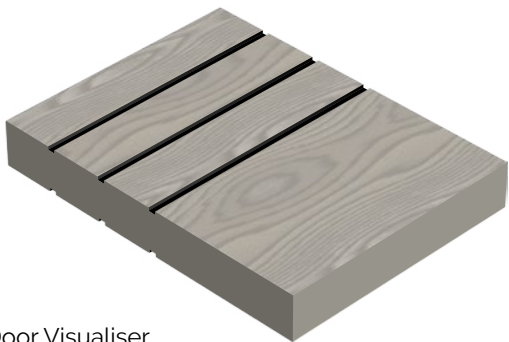


Size (mm)	Code
FINISHED	
1981 610 35	GARI20
1981 686 35	GARI23
1981 762 35	GARI26
1981 838 35	GARI29
1981 610 44	GARI20FD30 🔥
1981 686 44	GARI23FD30 🔥
1981 762 44	GARI26FD30 🔥
1981 838 44	GARI29FD30 🔥

Aria Grey Glazed



Size (mm)	Code
FINISHED	
1981 610 35	GARI20G
1981 686 35	GARI23G
1981 762 35	GARI26G
1981 838 35	GARI29G



View in our Door Visualiser



ARIA WHITE

Refreshingly unique

The Aria White's MDF face and grooves are primed ready for a paint finish. A flexible option for those wishing to add a personal touch to their living space.

Solid engineered cores for both standard 35mm and 44mm FD30 fire doors.

Matching glazed partner has clear flat safety glass with raised beading.

FD30 Fire doors are available from stock.



Aria White

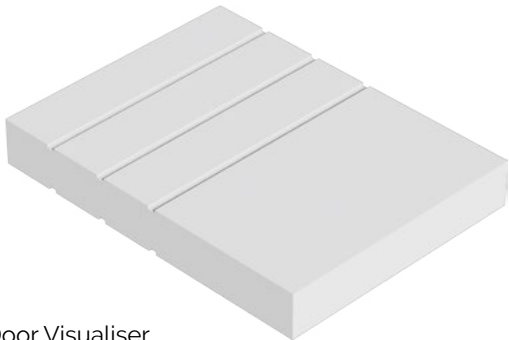


Size (mm)	Code
FINISHED	
1981 610 35	WARI20
1981 686 35	WARI23
1981 762 35	WARI26
1981 838 35	WARI29
1981 610 44	WARI20FD30 🔥
1981 686 44	WARI23FD30 🔥
1981 762 44	WARI26FD30 🔥
1981 838 44	WARI29FD30 🔥

Aria White Glazed



Size (mm)	Code
FINISHED	
1981 610 35	WARI20G
1981 686 35	WARI23G
1981 762 35	WARI26G
1981 838 35	WARI29G



View in our Door Visualiser

WHITE PRIMED DOOR



Installation

We recommend using 3 hinges to hang each door to prevent the risk of warping.

The Laminate Arias come finished and are ready to hang, however, paint retouching may be required if edges are trimmed. The Aria White is primed and will need some preparation. We advise fitting the door with all ironmongery prior to painting. Remove all ironmongery and the door from the frame, give the door a light sand to remove any nibs, wipe down with a damp cloth and then apply a top coat of paint.

For fire door installation, please consult the fire certification.

Trimming:

	MAXIMUM TRIMMING		
	off each long edge	off each top edge	off each bottom edge
35mm standard & glazed doors	12mm	10mm	10mm

Trimming allowances are for guidance only and if required should be kept to a minimum.

Rebated door pairs:

The 35mm (not fire doors) Aria White doors can be ordered as a rebated door pair (where a small section along the vertical edge of each door is removed so that they fit snugly together). Please ask for more information.

Edge painting:

If the laminate door edges are trimmed they will need to be repainted. We recommend the following paint colours as the closest match, mixed to a sheen level of 15%:

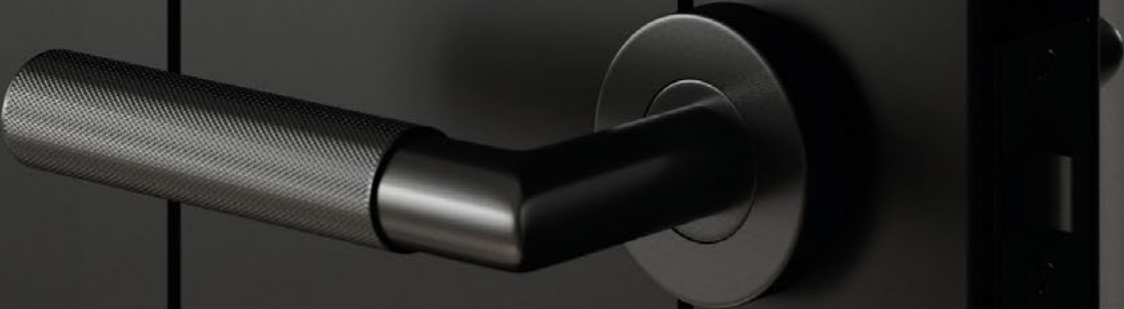
- Black – RAL 9005
- Oak – RAL 1011
- Grey – RAL 7030

Door Care

The Aria Laminate doors are very easy to maintain. We recommend cleaning the face of the doors on a regular basis with a damp cloth and mild detergent, followed by a dry cloth. The same principal applies to the Aria White doors but to keep them in top condition, we recommend freshening their paint finish every 2-3 years.

Door Handle Packs

Take a look at our range of handle packs, which include a pair of handles, a latch and 3 high quality, stainless steel ball bearing hinges. More styles available, see website.



Book a visit to our Showroom

At our showroom in Swadlincote, South Derbyshire, we have the largest display of JB Kind Doors in the UK.

To book simply call 01283 554197 or fill out the appointment form on our website.



See these doors on our Door Visualiser

All Aria doors are on our Door Visualiser. See how they look against different wall colours and flooring types.

[Let us help you #chooseyourdoors >](#)

