

Door Collection 2016



JBKind
DOORS

INSPIRATIONAL DOORS.
Undeniable value.

www.jbkind.com

Welcome to our 2016 Collection

At JB Kind we've been at the forefront of door design and distribution for more than three decades, so we know which door designs our customers really love and exactly what makes a high quality and affordable door.

Our 2016 Door Collection is a reminder of our years of industry knowledge. Packed with tried and tested favourites and new designs - like the wonderful Ripple door from our White Moulded range (page 71) - you won't be disappointed with the 80 plus variety-packed pages.

We've expanded our pocket doors section too (pages 8-10), which contains a step by step guide of what you need to know before you order. Door pairs are also incredibly popular, so you can find out more about our door pair rebating service on pages 12-13.

Of course, we've also got all of our staple information, from helping you choose your doors to a new selection of door furniture latch packs - we know it's often the little things that matter. And for those of you that have your own individual sense of style, then you'll find everything you need to know about our bespoke options service on page 11.



Contents

Helping You Choose Your JB Kind Doors	4-5	Simply Oak	56-57
At a Glance Guide	6	Gallery	58-59
Fire Door Information	7	Limelight	60-65
FSC® Certified	7	Calypso	66-69
Pocket Door Systems	8-10	White Moulded	70-73
Bespoke Options	11	Door Furniture	74-75
Door Pairs	12-13	Internal Accessories	76
Eco Colours	14-17	External Accessories	77
Symmetry	18-21	Glossary of Terms	77
Walnut Flush	22-25	Therm-L Exterior	78-81
Nuance	26-27	Essential Door Care	82
Royale Modern	28-31	Where to Buy Your JB Kind Doors	83
Royale Traditional	32-33		
Brisa	34-35		
Roma	36-39		
Elements	40-41		
River Oak Modern	42-43		
River Oak Cottage	44-47		
River Oak Traditional	48-51		
Montana	52-55		

Our dedication to meeting the highest standards for our customers is illustrated by our continuous achievement of the UK quality award, the ISO9001 accreditation. For information on our service standards and product promises, please refer to our Customer Charter which is available online at www.jbkind.com.



Architects, Specifiers and Designers

Our dynamic door designs offer undeniable value as well as compliance with a wide range of UK and European industry standards. From fire protection and thermal insulation to renewable resources and disabled access, you can rely on JB Kind to provide the quality standards you need. We have recognised third party accreditation from schemes such as BWF-CERTIFIRE and FSC® chain of custody.

If you have any questions or need some expert advice, don't hesitate to call us on 01283 554197.

Helping You Choose Your JB Kind Doors

Door finish

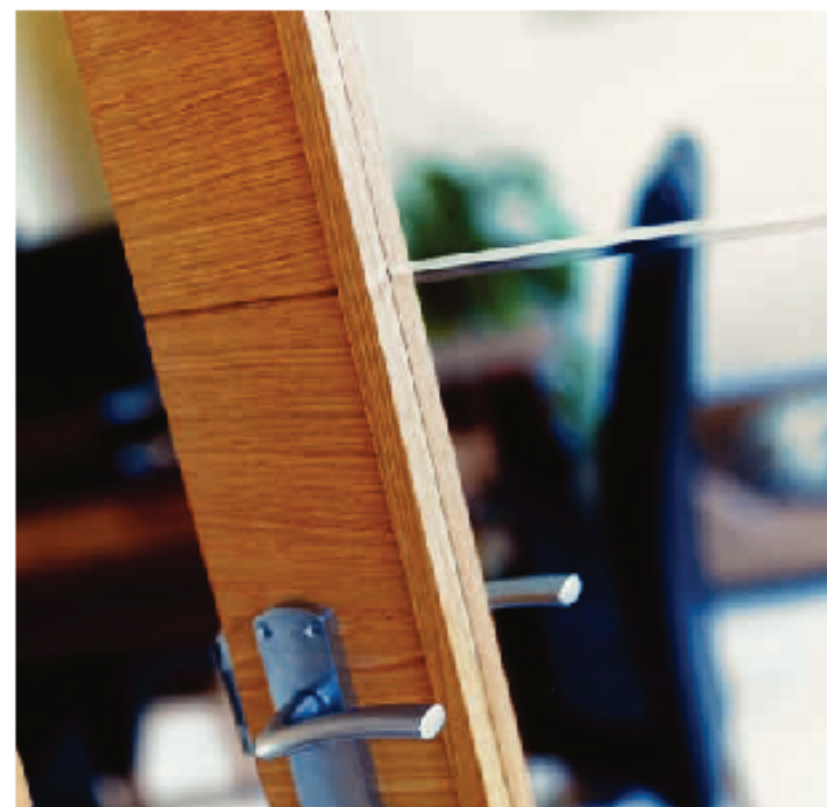
You can buy your doors pre-finished, unfinished or primed at JB Kind – but which would you prefer? If you want to stamp your own style on your doors by choosing your own paint or varnish, then an unfinished option is for you. If you want to receive your door ready to fit and with no extra work, then you'll need a fully finished version!

Whether you prefer classic veneers such as oak or walnut, contemporary painted or white primed finishes then you've come to the right place.



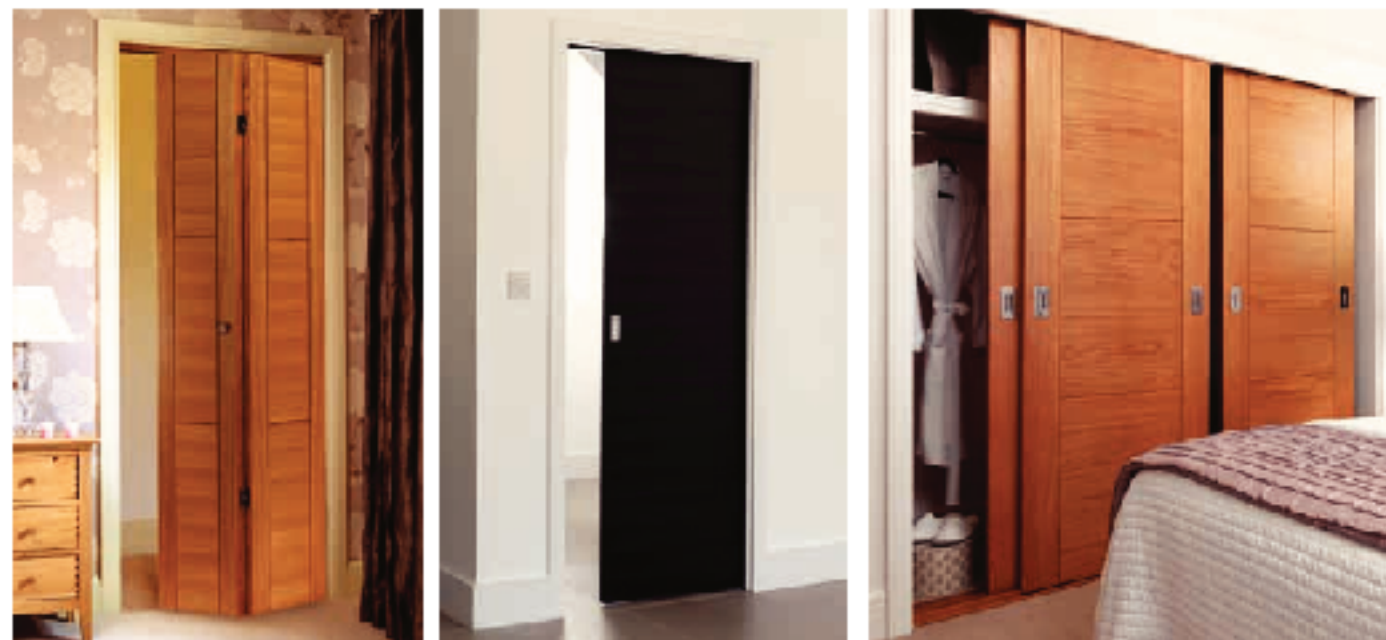
Door styles

Choosing the perfect door style for your home maybe a daunting decision, but with the help of JB Kind you'll find your perfect match. From classic traditional panelled designs to contemporary flush doors that incorporate stunning grooved patterns, or popular shaker panel to rustic cottage styles, you'll find them in our 2016 Door Collection.



Introduce some light

Most of our doors have glazed partners which can brighten up any home and add some much needed light to a darker room. Our ranges offer clear, etched, diamond cut and opaque glass options, so whatever your design style, there will be a glazed door that works for you.



Fold them, hide them and slide them

Our doors are incredibly versatile and by being creative with their placement – using them as wardrobe, sliding or bi-fold doors – you can make an individual design statement too. Virtually all of our ranges can be used for pocket sliding doors and many of our most popular door designs have matching bi-fold options – so take your pick from our classic, contemporary and innovative designs and find what works for your home.

Measuring up

You don't want to buy an ill-fitting door so to make sure you get the size right, follow our guide:

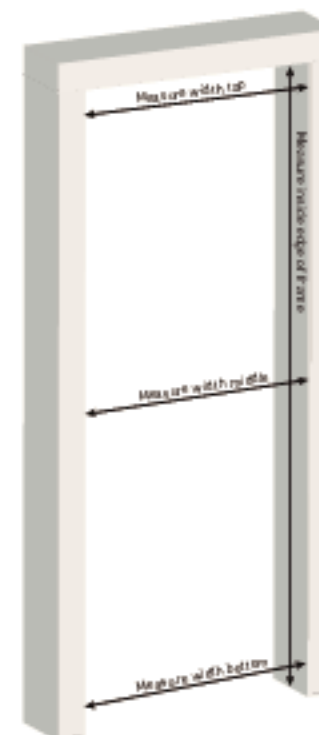
If you are buying replacement doors, do not measure the existing door. You must always base your measurements on the door frame.

Door width: Take three measurements inside the door frame – at the top, middle and bottom. The widest measurement determines the width of the door.

Door height: Measure the inside of each vertical side of the frame. The longest length determines the height required. Remember to make allowance for any floor covering.

Having gathered your measurements, compare them with the standard sizes available for your chosen door style. Select the most appropriate, remembering that you can plane the edges slightly to reduce the size. If required, please call us for details of the lipping size.

If you have a non-standard size requirement, call us, as bespoke sizes can be ordered for some of our door ranges.



Size conversion chart

Do you still work in feet and inches? If so, our useful conversion chart will help you work out the metric equivalent size for our doors.

HEIGHT & WIDTH		
Metric (mm)	Imperial (inches)	Imperial (feet & inches)
1981 x 457	78" x 18"	6'6" x 1'6"
1981 x 533	78" x 21"	6'6" x 1'9"
1981 x 610	78" x 24"	6'6" x 2'0"
1981 x 686	78" x 27"	6'6" x 2'3"
1981 x 711	78" x 28"	6'6" x 2'4"
1981 x 762	78" x 30"	6'6" x 2'6"
1981 x 838	78" x 33"	6'6" x 2'9"
1981 x 915	78" x 36"	6'6" x 3'0"
1981 x 1067	78" x 42"	6'6" x 3'6"
1981 x 1168	78" x 46"	6'6" x 3'10"
1981 x 1220	78" x 48"	6'6" x 4'0"
1981 x 1372	78" x 54"	6'6" x 4'6"
1981 x 1524	78" x 60"	6'6" x 5'0"
2032 x 813	80" x 32"	6'8" x 2'8"
2134 x 915	84" x 36"	7'0" x 3'0"
2040 x 526	80 1/4" x 20 1/4"	6'8 1/4" x 1'8 1/4"
2040 x 626	80 1/4" x 24 3/4"	6'8 1/4" x 2'10 3/4"
2040 x 726	80 1/4" x 28 3/4"	6'8 1/4" x 2'4 3/4"
2040 x 826	80 1/4" x 32 3/4"	6'8 1/4" x 2'8 3/4"
2040 x 926	80 1/4" x 36 3/4"	6'8 1/4" x 3'0 3/4"

At a Glance Guide



Take a look at the table below to find out which of our door ranges have the features that you desire. From finishes to fire doors, you can narrow down your choices with this super summary.

Range	Door Finish			Fire Doors (FD30)			Door Construction For non FD30 doors			Metric Sizes*	Bespoke Options	FSC®
	Pre-finished	Un-finished	Primed	Solid	Glazed	BWF-CERTIFIRE	Solid core	Semi-solid core	Standard core			
Eco Colours	✓			✓	•				✓		✓	✓
Symmetry - Oak & Walnut doors	✓			✓			✓					
Symmetry - White doors	✓		✓	✓				✓				✓
Walnut Flush	✓			✓	•	✓			✓	✓	✓	✓
Nuance	✓			✓	•	✓		✓			✓	✓
Royale Modern	✓	•		✓	•		✓				✓	✓
Royale Traditional	✓	✓		✓	✓	✓	✓			✓	✓	
Brisa	✓			✓	•			✓		✓		
Roma	✓			✓	✓	✓		✓			✓	
Elements	✓			✓	•	✓	✓				✓	✓
Elements - Agua only	✓			✓	•	✓			✓		✓	✓
River Oak Modern	✓	•		✓	✓		✓			✓	✓	
River Oak Cottage	✓	✓		✓			✓			✓	✓	
River Oak Traditional	•	✓		✓			✓			✓		
Montana	•	✓		✓			✓			✓		
Simply Oak	✓			✓			✓					
Gallery	✓			✓	•	✓			✓		✓	✓
Limelight			✓	✓	✓				✓	✓	✓	✓
Calypso			✓	✓			✓					✓
White Moulded			✓	✓	✓				✓	✓		✓
White Moulded - Ripple only			✓	✓				✓				✓
Therm-L Exterior		✓					✓					

✓ available from stock • can be ordered *Metric sizes are available to order throughout our ranges

PRE-FINISHED: Doors that are ready painted or varnished.

UNFINISHED: Doors that are prepared ready for a top coat finish eg. varnish or paint.

PRIMED: Doors that have been prepared with an undercoat ready for a top coat finish.

SOLID CORE: A heavy and solid centre to a door, it is normally made from wood-based timber components.

SEMI-SOLID CORE: The centre of the door is part solid and part cellular components.

STANDARD CORE: Standard core doors have a cellular structure inside the door. This means that the door is lighter in weight than solid or semi-solid core doors and is well suited to domestic use.



Fire doors are a serious business, and that's why we invest our time, energy and money to ensure that we have one of the most comprehensive, and accredited, collections of fire doors in the UK.

Virtually every JB Kind door range offers a complementary option for use in FD30 situations, and our bespoke service means that you can have FD30 fire doors in alternative designs, special sizes and even with a variety of glazing options. As responsible suppliers of fire resistant doors, we ensure that all of our FD30 (and FD60) doors have been tested in accordance with either the British BS476 pt22 or European EN1634-1:2000 standards.

All of our fire doors have a Fire Test Assessment report which is available upon request and outlines in detail exactly what you can and can't do when fitting any particular door. All fire doors are glazed with fire-rated glass.

For more information on fire doors, including details on Glazed Fire Doors & Part M (Mobility) visibility requirements, log on to www.jbkind.com or call 01283 554197.

Certificated Fire Doors

Many of the fire door ranges in this catalogue are certified within the BWF-CERTIFIRE scheme and the products where this applies are endorsed with the logo. BWF-CERTIFIRE certification validates these products suitable for use as fire doors and provides the means to independently authenticate the quality and performance of the doors to which this applies.



For more information on the BWF-CERTIFIRE scheme, visit www.jbkind.com



The mark of responsible forestry

FSC® Certified chain of custody door supplier

We hold our own FSC chain of custody certification for certain doors within our collection and are continually working towards increasing this range.

Chain of custody certification ensures that the systems within our business allow us to track the door from the day we buy it, through to the day we deliver it. Wherever you see the FSC® logo, doors within that range have been produced from certified materials and other controlled sources.

Pocket Door Systems



RIVER OAK, TIGRIS

Product info:

- Ready assembled for easy and accurate installation.
- The cassette structure is made from 0.5mm galvanised steel.
- The cassette sides are formed from single pieces of pressed steel which is corrugated for complete stability.
- Transverse ribs fixed to the corrugations further re-inforce the structure and allow fixing of plasterboard direct to the cassette.
- Twin spacer bars are supplied that are fixed between the cassette and jamb during installation to ensure the structure remains square.

A Pocket door system that enables doors to slide conveniently into a wall cavity and save space whilst looking incredibly stylish.

Pocket Door Systems continues overleaf

Easy to install with a rigid frame, our pocket door systems are supplied pre-assembled so that they can be fitted in half the time of other brands. Available for both single and double door situations in a selection of sizes, almost all of JB Kind's internal doors are suitable for use as a pocket door. You can also choose from a selection of pocket door accessories too!

Key features:

- Easy to install rigid frame, supplied pre-assembled
- Fitted in half the time of other brands
- Designed for stud and plasterboard
- The internal pocket cavity is protected by a cover during installation.
- Door is fitted after all installation and decoration has been completed, avoiding any potential damage to your door.
- Door choice can be changed in the future without structural alteration to the wall.
- Gives a finished wall thickness of 125mm
- Suits door thicknesses 35 – 44mm
- Maximum door weight 80Kg
- Compatible sliding door hardware available
- Available in single and double format

Timber Accessory Kits

Available in either white primed or varnished oak, Accessory Kits are required to complete pocket door installation.

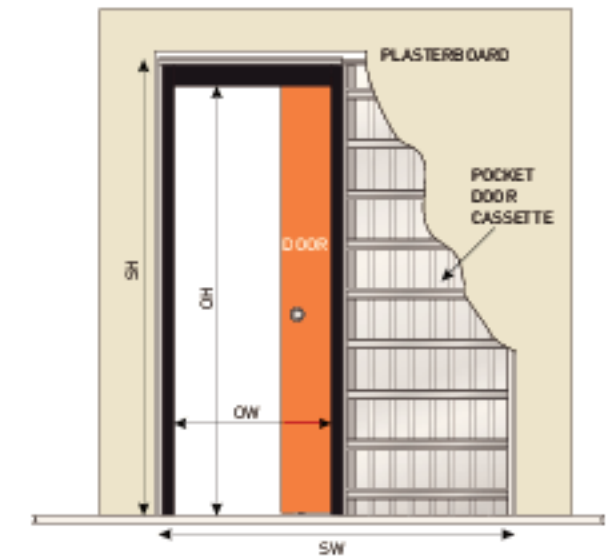
Includes: 2 x cover moulds with brush seals, 2 x header covers, 1 x jamb with seals

	Code
White primed – single pocket door kit	SOLWPR1AC
White primed – double pocket door kit	DBLWPR1AC
Oak varnished – single pocket door kit	SOLYD1AC
Oak varnished – double pocket door kit	DBLYD1AC



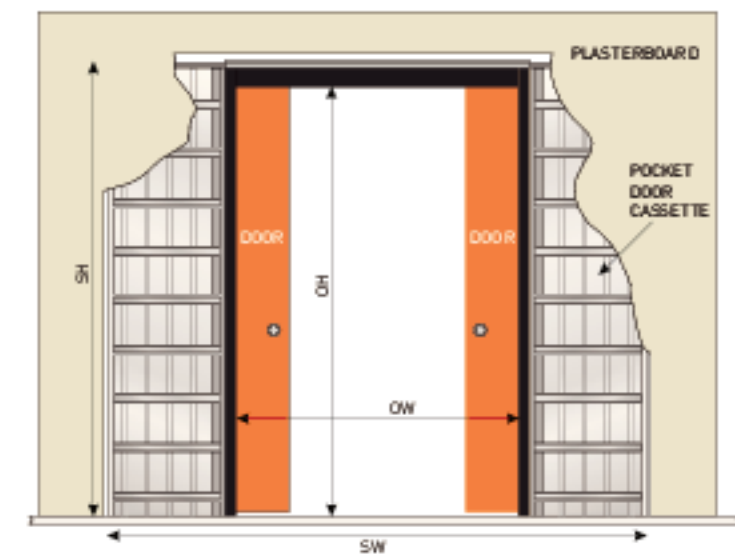
Additional Accessories

	Code
Soft close damper unit	SCDAMPER
Automatic door closer	ACLOSER
Flush Door Pull Pack (satin stainless steel, includes 2 circular flush pulls and a round finger pull for the door edge)	CIRCPULL
Bathroom Door Hook Lock Pack (satin stainless steel, includes turn and release, hook latch, adjustable keep and finger pull)	CIRCBATHLOCK



Single Pocket Door – Size Guide

mm	Door Size		Clear Opening Size (walkthrough area)		Structural Opening Size of the Unit		Finished Wall Thickness
	Width	Height	Width (OW)	Height (OH)	Width (SW)	Height (SH)	
Single pocket door system code							
POCSY550L686	686	1981	690	1970	1425	2075	125
POCSY550L762	762	1981	740	1970	1425	2075	125
POCSY550L838	838	1981	800	1970	1725	2075	125
POCSY550L915	915	1981	890	1970	1925	2075	125



Double Pocket Door – Size Guide

To create a double pocket door you will need to purchase two single pocket door systems and a double leaf conversion kit. Easy to assemble without requiring any modifications, the conversion kit includes a double top rail and two spacers.

mm	Door Size (individual)		Clear Opening Size (walkthrough area)		Structural Opening Size of the Unit		Finished Wall Thickness
	Width	Height	Width (OW)	Height (OH)	Width (SW)	Height (SH)	
Double leaf conversion kit code							
DBLLEAFKIT686	686	1981	1300	1970	2742	2075	125
DBLLEAFKIT762	762	1981	1500	1970	3142	2075	125
DBLLEAFKIT838	838	1981	1600	1970	3342	2075	125
DBLLEAFKIT915	915	1981	1800	1970	3742	2075	125

How to order your Pocket door system:

Your step by step guide

You've discovered the benefits, understood the key features and decided that you want to order at least one pocket door system. Follow the steps below to be sure that what you order is exactly what you want and matches your requirements.

Step one: Do you want a Single or Double Pocket Door System?

Take a moment to check your pocket door size requirements against our size guide tables. And don't forget, if you'd like to order a double pocket door, you will need to purchase two single pocket door systems and a double leaf conversion kit.

Step two: Does your chosen door design work in a pocket door system?

At JB Kind we offer more than 200 different door designs and the majority of these are suitable for use as pocket doors. However, there are a few ranges that just can't practically be converted and it's sensible to check before you order.



We've designed a 'Use with our pocket door system' badge to look out for in our brochure and on our website.

If you're in any doubt, just get in touch and we'll guide you through your options.

Step three: What type of timber accessories will you choose?

Whatever type of pocket door you choose, you'll need an accessory kit as the pocket door system cannot be installed without one. Choose from either white primed or varnished oak, available for both single and double pocket door systems. For Architrave, please see page 76.

Step four: Have you remembered to ask for your door to be grooved?

This might sound complicated and costly but it really isn't, it just needs to be done! Door grooving is when the bottom edge of the door is grooved to fit in the floor guide of a pocket system. Save your joiner or builder some time, as our in-house joinery workshop can pre-groove

your doors prior to delivery, it'll only be a small additional charge.

Step five: There are also more optional accessories for you to choose from:

Self-closing system: If you'd like your pocket doors to glide into place automatically after they have been opened, then our Automatic Door Closer optional extra is definitely for you.

Soft-closing system: Known as a Soft Close Damper Unit, this accessory applies a brake making sure that your door moves slowly and smoothly to a close.

Step six: What door furniture would you like?

Whether you want a privacy lock for a bathroom or a flush door pull, we offer a selection of quality fittings. Make life easy and source all of your pocket door related purchases all in one place.

Step seven: Finding a JB Kind door supplier

So, we've covered all the technical stuff that you need to do and now you get to order your doors and pocket systems. Finding a supplier is really easy - take a look at the Supplier Locator on our website, where you can pop in your postcode to find a local outlet. You can also order from any of our Online Partners listed on our website.

Once you've chosen a place to purchase from, then just hand over all of your requirements and your doors and pocket systems should be with you in no time!

If you do have any questions, our expert JB Kind team is on hand to help you out, just call 01283 554197 or email info@jbkind.com



ECO COLOURS, GRIGIO

Whether you're self-building, renovating your home, purchasing for a development project or you're an interior design expert, you'll want to take a look at JB Kind's bespoke options. The versatility of our bespoke service is ideal for those special requirements.



Let there be light

Whether you prefer a full glazed panel or smaller apertures, there are so many options for a glazed door. Clear, bevelled, diamond cut and etched are some of the most popular glazing types. Let us know what you would like to achieve and we'll advise on the options.

Made to Measure: Individually Tailored Doors

There are a wide range of standard door sizes available, however, sometimes you just cannot avoid an awkwardly sized door opening. Many of the doors from our collection can be produced to order as a special size and of course any door designs that are created just for you. Call us to discuss your requirements.

Fire doors

JB Kind can supply bespoke fire doors, in a wide range of solid and glazed options. Supported by the appropriate accreditations, you can be safe and stylish.

For lots more information on the bespoke options that are available, visit www.jbkind.com or talk to us, we are here to help.

Rebated Door Pairs

Please enquire if you would like a rebated door pair creating that cannot be accommodated from our stock ranges. Many of our door styles or designs which have been individually specified, can be made to order as a rebated pair.

Timber Veneers and Painted Finishes

Perhaps you love one of the designs from our Door Collection but would prefer it in a different timber veneer or painted finish, or perhaps you would like to create a style that is completely unique and different? More veneers and painted finishes can be viewed online at www.jbkind.com.



And don't forget - you can always mix different veneers together.



Door Pairs – Rebating Service



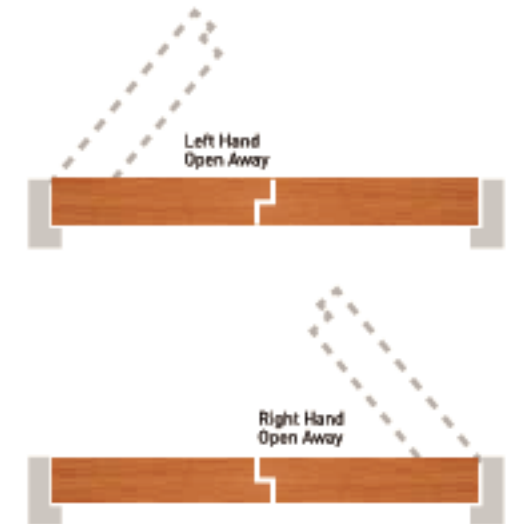
MONTANA, FUJI

In-house door pair rebating service

Door pairs, or double doors as they are often known, really do add a touch of style and class to a home. Perfect for introducing a partition between two rooms with the added benefit of creating an open plan feel when required.

If you would like to fit a first-class door pair, we would recommend considering Rebated Meeting Stiles. Rebating means removing a section along the vertical edge of each door where they meet to allow them to fit snugly together, eliminating the small gap that you would see with square meeting stiles (two doors fitted side by side).

Our in-house joinery workshop provides this service, offering a very quick turnaround for those doors which are suitable for rebating and held in stock.



Doors available from stock – suitable for rebating

Door Range	Door Designs	Sizes available
Symmetry – pages 18-21	All door designs	All sizes
River Oak Modern – pages 42-43	Isis & Medina	1981mm x 686mm x 25mm & 1981mm x 762mm x 35mm
River Oak Cottage – pages 46-47	Yoxall & Tutbury	All sizes
Montana – pages 52-55	All door designs	All sizes
Limelight – pages 60-65	All door designs	All sizes
Calypso – pages 66-69	All door designs	All sizes

Please note that a minimum 15mm lipping around the door edge is required to machine the rebate. The table above lists the door designs in stock that can accommodate a rebate. If your preferred door type is not listed, please contact us as rebated door pairs are still available for many more of our door ranges, ordered through our bespoke options service with a slightly longer lead time.

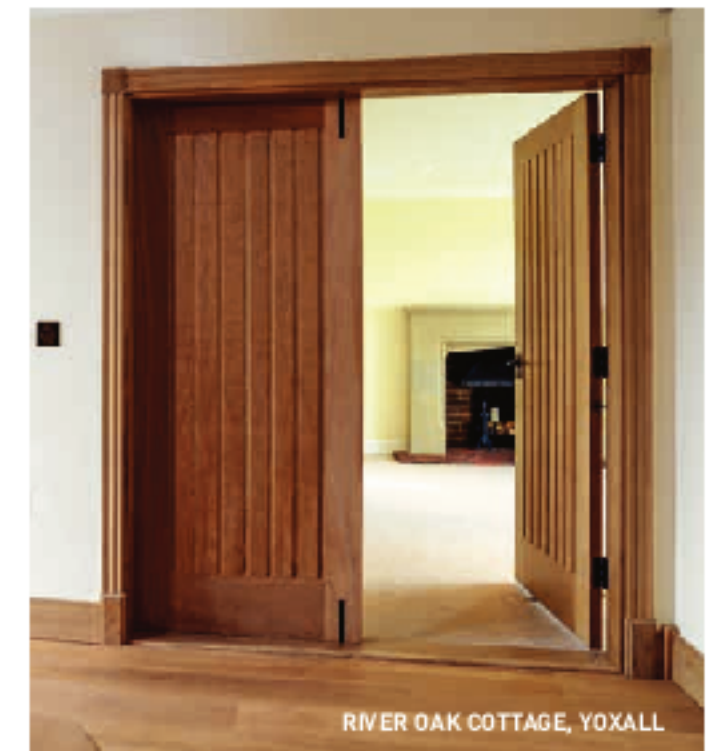
For more information on our Door Pair rebating service, visit www.jbkind.com or call our Sales team on 01283 554197 to discuss your requirements.

Pair Maker

If you don't want to go down the rebating route, there is also the option to buy a purpose made Pair Maker, see page 76.



CALYPSO, AURORA GLAZED



RIVER OAK COTTAGE, YOXALL

- Contemporary painted finishes
- Unique to JB Kind with bespoke options
- FD30 fire doors (glazed FD30 available to order)
- FSC® chain of custody certified



ECO PARELO GLAZED
shown with Drift handles, see page 75

Bespoke Options:

Alternative designs, painted finishes and special sizes can be made to order.

Call our Sales team on 01283 554197 to discuss your requirements.

Choose a contemporary painted finish and add style to your doors and your home. From satin white enhanced with black grooves to the dark allure of ash grey or warmth of soft walnut – our Eco Colours door collection is the perfect complement for a modern design theme.

Using state of the art paint technology that creates a flawless timber graining effect, you can enjoy the benefit of a natural veneer at a fraction of the cost. Plus the superior painted finish offers consistent uniformity, ideal for matching purposes.



ECO MOCHA
Soft walnut with vertical grain



ECO MOCHA
Ivory grooved



ECO MOCHA GLAZED
Clear safety glass, Ivory grooved



ECO ARGENTO
Silver grooved



ECO ARGENTO GLAZED
Clear safety glass, Silver grooved



ECO ARGENTO
Ash grey with vertical grain



PRE-FINISHED FIRE DOORS
1981 686 45 ECMOCH23
1981 762 45 ECMOCH26
1981 838 45 ECMOCH29



PRE-FINISHED
1981 686 35 ECMOC230
1981 762 35 ECMOC260
1981 838 35 ECMOC290



PRE-FINISHED
1981 610 35 ECARG20
1981 686 35 ECARG23
1981 762 35 ECARG26
1981 838 35 ECARG29



PRE-FINISHED
1981 686 35 ECARG230
1981 762 35 ECARG260
1981 838 35 ECARG290



ECO LINEA/PARELO
Satin white



ECO PARELO
Black grooved



ECO PARELO GLAZED
Black grooved
Clear safety glass



ECO LINEA
Black grooved



ECO LINEA GLAZED
Black grooved
Clear safety glass

PRE-FINISHED
1981 610 35 ECPAR20
1981 686 35 ECPAR23
1981 762 35 ECPAR26
1981 838 35 ECPAR29
PRE-FINISHED FIRE DOORS
1981 686 45 ECPARH23
1981 762 45 ECPARH26
1981 838 45 ECPARH29

PRE-FINISHED
1981 686 35 ECPAR230
1981 762 35 ECPAR260
1981 838 35 ECPAR290

PRE-FINISHED
1981 610 35 ECLIN20
1981 686 35 ECLIN23
1981 762 35 ECLIN26
1981 838 35 ECLIN29
PRE-FINISHED FIRE DOORS
1981 686 45 ECLINH23
1981 762 45 ECLINH26
1981 838 45 ECLINH29

PRE-FINISHED
1981 686 35 ECLIN230
1981 762 35 ECLIN260
1981 838 35 ECLIN290

Eco Colours continues overleaf



ECO ARGENTO



ECO MOCHA



Bespoke Options:
Alternative design styles are available in a variety of painted finishes. Flush doors with horizontal or vertical graining, grooved effects and aluminium coloured inlays are just a few options. Special sizes, wardrobe doors and matching frames/architraves can also be made to order.
Call our Sales team on **01283 554197** to discuss your requirements.



ECO BLANCO
Satin white



ECO BLANCO
Aluminium coloured inlays



ECO BLANCO GLAZED
Aluminium coloured inlays
Clear safety glass



ECO GRIGIO



ECO GRIGIO GLAZED
Clear safety glass



ECO WENGE
Grooved



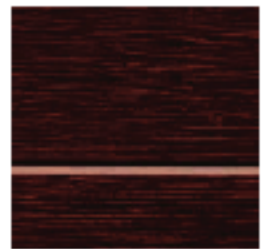
ECO WENGE GLAZED
Clear safety glass



ECO MIEL



ECO MIEL GLAZED
Clear safety glass



ECO WENGE
Horizontal grain



ECO GRIGIO
Ash grey with
horizontal grain

Height/Width/ Thickness mm	Product Code
1981 610 35	ECBLA20
1981 686 35	ECBLA23
1981 762 35	ECBLA26
1981 838 35	ECBLA29
PRE-FINISHED FIRE DOORS	
1981 686 65	ECBLAHH23
1981 762 65	ECBLAHH26
1981 838 65	ECBLAHH29

Height/Width/ Thickness mm	Product Code
1981 686 35	ECBLA230
1981 762 35	ECBLA260
1981 838 35	ECBLA290

Height/Width/ Thickness mm	Product Code
1981 610 35	ECGRH20
1981 686 35	ECGRH23
1981 762 35	ECGRH26
1981 838 35	ECGRH29
PRE-FINISHED FIRE DOORS	
1981 686 65	ECGRHH23
1981 762 65	ECGRHH26
1981 838 65	ECGRHH29

Height/Width/ Thickness mm	Product Code
1981 686 35	ECGRH230
1981 762 35	ECGRH260
1981 838 35	ECGRH290

Height/Width/ Thickness mm	Product Code
1981 610 35	ECWEN20
1981 686 35	ECWEN23
1981 762 35	ECWEN26
1981 838 35	ECWEN29
PRE-FINISHED FIRE DOORS	
1981 686 65	ECWENH23
1981 762 65	ECWENH26
1981 838 65	ECWENH29

Height/Width/ Thickness mm	Product Code
1981 686 35	ECWEN230
1981 762 35	ECWEN260
1981 838 35	ECWEN290

Height/Width/ Thickness mm	Product Code
1981 610 35	ECMIE20
1981 686 35	ECMIE23
1981 762 35	ECMIE26
1981 838 35	ECMIE29
PRE-FINISHED FIRE DOORS	
1981 686 65	ECMIEH23
1981 762 65	ECMIEH26
1981 838 65	ECMIEH29

Height/Width/ Thickness mm	Product Code
1981 686 35	ECMIE230
1981 762 35	ECMIE260
1981 838 35	ECMIE290



ECO MIEL
Honey oak with
horizontal grain

Symmetry

- Wide shaker panel designs
- Unique to JB Kind
- Bi-fold options
- FD30 fire doors
- FSC® chain of custody certified for selected door designs



AXIS WHITE
shown with Roller handles, see page 75

Do you love a modern interior with a classic touch? Then the subtle, clean style of our Symmetry range will be the perfect complement for your design theme.

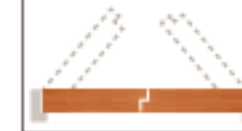
Exclusive to JB Kind, Symmetry's wide shaker panel designs offer a contemporary look that will not date. The popular Axis style is available in white, oak, walnut and monochrome, so you can choose your favourite finish or contrast the colour styles. Perhaps white upstairs and oak or walnut downstairs – whatever you prefer!

Our Bi-fold doors are easy to install in to existing frames, supplied ready hinged with pivots, brackets and a sliding track.



Doors marked with † are not FSC certified

Rebated Door Pairs can be ordered from stock with a short lead time. See page 12



Timber veneers are a natural material and variations in the colour and graining should be expected. Colours depicted are representative only.



AXIS OAK†

Height/Width/Thickness mm	Product Code
PRE-FINISHED	
1981 610 35	VOAX120
1981 685 35	VOAX123
1981 762 35	VOAX126
1981 838 35	VOAX129
PRE-FINISHED FIRE DOORS	
1981 685 66	VOAX123 FD30
1981 762 66	VOAX126 FD30
1981 838 66	VOAX129 FD30



AXIS WHITE

Height/Width/Thickness mm	Product Code
PRIMED	
1981 610 35	SAX120
1981 685 35	SAX123
1981 762 35	SAX126
1981 838 35	SAX129
PRIMED FIRE DOORS	
1981 685 66	SAX123 FD30
1981 762 66	SAX126 FD30
1981 838 66	SAX129 FD30



AXIS WHITE GLAZED
Clear safety glass

Height/Width/Thickness mm	Product Code
PRIMED	
1981 685 35	SAX230
1981 762 35	SAX260
1981 838 35	SAX290



AXIS OAK GLAZED†
Clear safety glass

Height/Width/Thickness mm	Product Code
PRE-FINISHED	
1981 685 35	VOAX123 G
1981 762 35	VOAX126 G
1981 838 35	VOAX129 G



AXIS WHITE BI-FOLD**

Height/Width/Thickness mm	Product Code
PRIMED	
1981 762 35	SAX18F26



AXIS WHITE GLAZED BI-FOLD**
Clear safety glass

Height/Width/Thickness mm	Product Code
PRIMED	
1981 762 35	SAX18F626

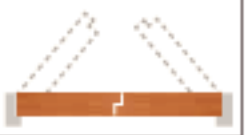
**Please note that the door opening sizes are listed and that the actual bi-folds supplied are slightly smaller to accommodate tracking.

Symmetry continues overleaf



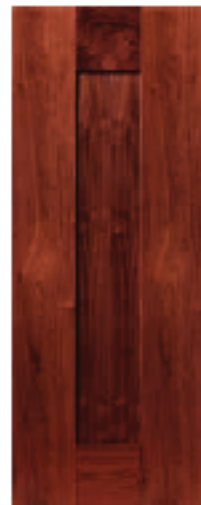
Doors marked with † are not FSC certified

Rebated Door Pairs can be ordered from stock with a short lead time. See page 12



Using symmetrical design as a basis, these clean, contemporary doors represent exceptional value for money.

Black and white is back – make a statement in your home with our pre-finished Axis monochrome door and introduce a Wow factor with its striking chequered opaque glass partner.



AXIS WALNUT†

Height/Width/ Thickness mm	Product Code
PRE-FINISHED	
1981 610 35	VWAX120
1981 686 35	VWAX123
1981 762 35	VWAX126
1981 838 35	VWAX129
PRE-FINISHED FIRE DOORS	
1981 686 66	VWAX123FD30
1981 762 66	VWAX126FD30
1981 838 66	VWAX129FD30



AXIS WALNUT GLAZED†
Clear safety glass

Height/Width/ Thickness mm	Product Code
PRE-FINISHED	
1981 686 35	VWAX230
1981 762 35	VWAX260
1981 838 35	VWAX290



AXIS MONOCHROME
Black panel

Height/Width/ Thickness mm	Product Code
PRE-FINISHED	
1981 610 35	SAXIMON20
1981 686 35	SAXIMON23
1981 762 35	SAXIMON26
1981 838 35	SAXIMON29



AXIS MONOCHROME
GLAZED
Opaque, chequered safety glass

Height/Width/ Thickness mm	Product Code
PRE-FINISHED	
1981 686 35	SAXIMON230
1981 762 35	SAXIMON260
1981 838 35	SAXIMON290



GEO

Height/Width/ Thickness mm	Product Code
PRIMED	
1981 610 35	SOE020
1981 686 35	SOE023
1981 762 35	SOE026
1981 838 35	SOE029
PRIMED FIRE DOORS	
1981 686 66	SOE023FD30
1981 762 66	SOE026FD30
1981 838 66	SOE029FD30



GEO GLAZED
Clear safety glass

Height/Width/ Thickness mm	Product Code
PRIMED	
1981 686 35	SOE0230
1981 762 35	SOE0260
1981 838 35	SOE0290



ECCENTRO

Height/Width/ Thickness mm	Product Code
PRIMED	
1981 610 35	SECC20
1981 686 35	SECC23
1981 762 35	SECC26
1981 838 35	SECC29
PRIMED FIRE DOORS	
1981 686 66	SECC23FD30
1981 762 66	SECC26FD30
1981 838 66	SECC29FD30



ECCENTRO GLAZED
Clear safety glass

Height/Width/ Thickness mm	Product Code
PRIMED	
1981 686 35	SECC230
1981 762 35	SECC260
1981 838 35	SECC290

Add the finishing touch with a latch pack, see page 75.



SMARTLATCH

Walnut Flush

- Real walnut veneers
- Supplied fully finished
- BWF-CERTIFIRE FD30 fire doors for selected door designs
- FSC® chain of custody certified for selected door designs



Bespoke Options:
Alternative walnut door designs, special sizes and rebated door pairs can be made to order.
Call our Sales team on 01283 554197 to discuss your requirements.

FERNOR

Sleek stylish walnut doors have been making a comeback over the past few years and are now definitely here to stay.

The warmth of colour and stunning finish of our Walnut Flush doors, really does add a touch of style and class to your build project or renovation. Supported with a flexible bespoke options service, you will have the peace of mind that any special requirements can be met.



Doors marked with † do not have BWF-CERTIFIRE or FSC certification

Timber veneers are a natural material and variations in the colour and graining should be expected. Colours depicted are representative only.



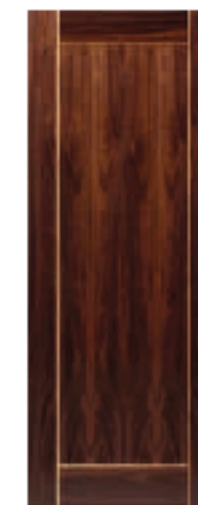
MISTRAL WALNUT†
Grained

Height/Width/ Thickness mm	Product Code	Height/Width/ Thickness mm	Product Code
PRE-FINISHED			
1981 610 35	WMIS20	1981 686 66	WMIS23FD30
1981 686 35	WMIS23	1981 762 66	WMIS26FD30
1981 762 35	WMIS26	1981 838 66	WMIS29FD30
1981 838 35	WMIS29	2060 726 66	WMIS26FD30
2060 626 60	WMIS626	2060 826 66	WMIS26FD30
2060 726 60	WMIS726	2060 926 66	WMIS26FD30
2060 826 60	WMIS826		



MISTRAL WALNUT GLAZED†
Clear safety glass, Oak inlay

Height/Width/ Thickness mm	Product Code
PRE-FINISHED	
1981 610 35	WMIS23G
1981 762 35	WMIS26G
1981 838 35	WMIS29G
2060 626 60	WMIS626G
2060 726 60	WMIS726G
2060 826 60	WMIS826G



VINA
Oak inlay

Height/Width/ Thickness mm	Product Code
PRE-FINISHED	
1981 610 35	WVIN20
1981 686 35	WVIN23
1981 762 35	WVIN26
1981 838 35	WVIN29
PRE-FINISHED FIRE DOORS	
1981 686 66	WVIN23FD30
1981 762 66	WVIN26FD30
1981 838 66	WVIN29FD30



VALCOR
Clear safety glass, Oak inlay

Height/Width/ Thickness mm	Product Code
PRE-FINISHED	
1981 610 35	WVAL23
1981 762 35	WVAL26
1981 838 35	WVAL29

Mistral Walnut also available as:



MISTRAL OAK
see page 35



WHITE MISTRAL
see page 61

Add the finishing touch with a latch pack, see page 75.



SMARTLATCH

Walnut Flush continues overleaf



LARA



FRANQUETTE

The luxury varnish finish and premium quality veneers set our Walnut Flush doors apart from any other. Whether you prefer the contrast of vertical and horizontal veneers with oak inlays, plain flush or grooved designs – you are spoilt for choice.



MAYETTE
Oak inlay



EDRAS
Clear safety glass,
Oak inlay



LARA*
Grooved



PARISIENNE*
Clear safety glass



FERNOR*



FRANQUETTE*
Clear safety glass



Bespoke Options:
Alternative walnut door designs, special sizes and rebated door pairs can be made to order.

Call our Sales team on **01283 554197** to discuss your requirements.

Add the finishing touch with a latch pack, see page 75.



SMARTLATCH

Height/Width/ Thickness mm	Product Code
PRE-FINISHED	
1981 610 35	WMAY20
1981 686 35	WMAY23
1981 762 35	WMAY26
1981 838 35	WMAY29
PRE-FINISHED FIRE DOORS	
1981 686 66	WMAY23FD30
1981 762 66	WMAY26FD30
1981 838 66	WMAY29FD30

Height/Width/ Thickness mm	Product Code
PRE-FINISHED	
1981 686 35	WEDR23
1981 762 35	WEDR26
1981 838 35	WEDR29
PRE-FINISHED FIRE DOORS	
1981 610 66	WLAR20FD30
1981 686 66	WLAR23FD30
1981 762 66	WLAR26FD30
1981 838 66	WLAR29FD30

Height/Width/ Thickness mm	Product Code
PRE-FINISHED	
1981 610 35	WPAR23
1981 686 35	WPAR26
1981 762 35	WPAR29
PRE-FINISHED FIRE DOORS	
1981 610 66	WPAR23FD30
1981 686 66	WPAR26FD30
1981 762 66	WPAR29FD30

Height/Width/ Thickness mm	Product Code
PRE-FINISHED	
1981 610 35	WFER20
1981 686 35	WFER23
1981 762 35	WFER26
1981 838 35	WFER29
PRE-FINISHED FIRE DOORS	
1981 610 66	WFER20FD30
1981 686 66	WFER23FD30
1981 762 66	WFER26FD30
1981 838 66	WFER29FD30

Height/Width/ Thickness mm	Product Code
PRE-FINISHED	
1981 686 35	WFR23
1981 762 35	WFR26
1981 838 35	WFR29
PRE-FINISHED FIRE DOORS	
1981 686 66	WFR23FD30
1981 762 66	WFR26FD30
1981 838 66	WFR29FD30

* Matching door pairs cannot be guaranteed

Timber veneers are a natural material and variations in the colour and grainings should be expected. Colours depicted are representative only.

- Unique painted colour finishes
- Contemporary grooved panel design
- BWF-CERTIFIRE FD30 fire doors



ARDOSIA GLAZED

Bespoke Options:

Alternative designs, painted finishes and special sizes can be made to order. Minimum quantity may apply.

Call our Sales team on 01283 554197 to discuss your requirements.

Whether you prefer a touch of grey or a natural hint of colour, the Nuance door range is perfect for a modern interior and the trend for neutral tones. Our innovative painting technique achieves a beautiful timber graining effect, enhanced with a stylish grooved pattern.

The superior finish guarantees uniformity for matching purposes, whilst delivering excellent value for money.



Colours depicted are representative only



VIRIDIS
A natural colour tone with an underlying hint of green



VIRIDIS
Light coloured grooves

Height/Width/ Thickness mm	Product Code
FINISHED	
1981 610 35	NVIR20
1981 686 35	NVIR23
1981 762 35	NVIR26
1981 838 35	NVIR29
FINISHED FIRE DOORS	
1981 686 66	NVIR23FD00
1981 762 66	NVIR26FD00
1981 838 66	NVIR29FD00



ARDOSIA
Grey coloured grooves

Height/Width/ Thickness mm	Product Code
FINISHED	
1981 610 35	NARD20
1981 686 35	NARD23
1981 762 35	NARD26
1981 838 35	NARD29
FINISHED FIRE DOORS	
1981 686 66	NARD23FD00
1981 762 66	NARD26FD00
1981 838 66	NARD29FD00



ARDOSIA GLAZED
Grey coloured grooves,
Clear safety glass

Height/Width/ Thickness mm	Product Code
FINISHED	
1981 686 35	NARD23G
1981 762 35	NARD26G
1981 838 35	NARD29G



VIRIDIS GLAZED
Light coloured grooves,
Clear safety glass

Height/Width/ Thickness mm	Product Code
FINISHED	
1981 686 35	NVIR23G
1981 762 35	NVIR26G
1981 838 35	NVIR29G



ARABICA
Light coloured grooves

Height/Width/ Thickness mm	Product Code
FINISHED	
1981 610 35	NARA20
1981 686 35	NARA23
1981 762 35	NARA26
1981 838 35	NARA29
FINISHED FIRE DOORS	
1981 686 66	NARA23FD00
1981 762 66	NARA26FD00
1981 838 66	NARA29FD00



ARDOSIA
A delightful slate grey with timber grained effect



ARABICA
A charming warm brown with timber grained effect



ARABICA GLAZED
Light coloured grooves,
Clear safety glass

Height/Width/ Thickness mm	Product Code
FINISHED	
1981 686 35	NARA23G
1981 762 35	NARA26G
1981 838 35	NARA29G



Bespoke Options:

All Royale doors are available in alternative timber veneers and special sizes, as well as many other design styles. Rebated door pairs are available to order.

Call our Sales team on 01283 554197 to discuss your requirements.

VT5-1VB OAK

- Real oak veneers with a luxury varnish finish
- Solid core construction
- Fully accredited FD30 fire doors (glazed FD30 available to order)
- FSC® chain of custody certified for selected door designs

Stylish real oak veneered internal doors never fail to impress and our prestigious Royale Modern range will not disappoint.

The matching glazed partners on this page are fitted with attractive clear diamond cut glass, which really adds a touch of class to these beautiful doors. Supported by our flexible bespoke options service, you can be confident that any special requirements will be met.



VP7 OAK

Height/Width/ Thickness mm	Product Code
PRE-FINISHED	
1981 610 35	VP7610-0
1981 686 35	VP7686-0
1981 762 35	VP7762-0
1981 838 35	VP7838-0
PRE-FINISHED FIRE DOORS	
1981 686 45	VP7H686-0
1981 762 45	VP7H762-0
1981 838 45	VP7H838-0

Add the finishing touch with a latch pack, see page 75.



SMARTLATCH

Timber accessories
Architraves, linings
and skirting.
See page 76.



Timber veneers are a natural material and variations in the colour and graining should be expected. Colours depicted are representative only.

* Matching door pairs cannot be guaranteed



VP7-1VC8 OAK

Clear diamond cut safety glass

Height/Width/ Thickness mm	Product Code
PRE-FINISHED	
1981 686 35	VP71VC8686-0
1981 762 35	VP71VC8762-0
1981 838 35	VP71VC8838-0



VT5 OAK*

Height/Width/ Thickness mm	Product Code
PRE-FINISHED	
1981 610 35	VT5610-0
1981 686 35	VT5686-0
1981 762 35	VT5762-0
1981 838 35	VT5838-0
PRE-FINISHED FIRE DOORS	
1981 686 45	VT5H686-0
1981 762 45	VT5H762-0
1981 838 45	VT5H838-0



VT5-1VB OAK*

Clear diamond cut safety glass

Height/Width/ Thickness mm	Product Code
PRE-FINISHED	
1981 686 35	VT51VB686-0
1981 762 35	VT51VB762-0
1981 838 35	VT51VB838-0

Royale Modern
continues overleaf



VP7 OAK



VP7 OAK

Whether you are purchasing for a development, self-building or refurbishing your home, the stylish Royale Modern door designs will add that perfect finishing touch to your project.

The versatility offered by all our Royale doors is a great advantage. Rebated door pairs, as well as special sizes and alternative glazed options are available to order – the possibilities are virtually endless.



R-11-2M OAK[†]



R-11-2V OAK[†]
Clear bevelled safety glass



R-03 OAK[†]



R-03-3V OAK[†]
Clear bevelled safety glass



Bespoke Options:
All Royale doors are available in alternative timber veneers and special sizes, as well as many other design styles
Call our Sales team on **01283 554197** to discuss your requirements.

Add the finishing touch with a latch pack, see page 75.



Doors marked with † are not FSC certified

Timber veneers are a natural material and variations in the colour and graining should be expected. Colours depicted are representative only.

Height/Width/Thickness mm	Product Code
PRE-FINISHED	
1981 686 35	R112M686-0
1981 762 35	R112M762-0
1981 838 35	R112M838-0
PRE-FINISHED FIRE DOORS	
1981 762 45	R112M68762-0
1981 838 45	R112M68838-0

Height/Width/Thickness mm	Product Code
PRE-FINISHED	
1981 686 35	R112V686-0
1981 762 35	R112V762-0
1981 838 35	R112V838-0

Height/Width/Thickness mm	Product Code
PRE-FINISHED	
1981 610 35	R03610-0
1981 686 35	R03686-0
1981 762 35	R03762-0
1981 838 35	R03838-0
PRE-FINISHED FIRE DOORS	
1981 762 45	R03H6762-0
1981 838 45	R03H838-0

Height/Width/Thickness mm	Product Code
PRE-FINISHED	
1981 686 35	R033V686-0
1981 762 35	R033V762-0
1981 838 35	R033V838-0

Royale Traditional

- Real oak veneers
- Pre-finished & unfinished options
- Solid core construction
- BWF-CERTIFIRE FD30 fire doors for solid and glazed models



E14M OAK

Bespoke Options:

All Royale doors are available in alternative timber veneers and special sizes, as well as many other design styles. Rebated door pairs are available to order.

Call our Sales team on 01283 554197 to discuss your requirements.

Classic style premium quality oak panelled doors that are a touch above the rest. Offering the same benefits as our Royale Modern range, you will find the versatile bespoke options and premium construction, awards this collection its top status. Suitable for use in almost every type of property from period refurbishments to new builds, you are sure to be impressed.

Some of the designs are available from stock both finished and unfinished. Those marked with an * are available fully finished to order. Rebated door pairs can also be ordered through our bespoke options service.



12M OAK

Height/Width/ Thickness mm	Product Code
PRE-FINISHED	
1981 610 35	12M610-0
1981 686 35	12M686-0
1981 762 35	12M762-0
1981 838 35	12M838-0
2030 625 60	12M625-0
2030 725 60	12M725-0
2030 825 60	12M825-0
PRE-FINISHED FIRE DOORS	
1981 610 65	U012MN20FD30
1981 686 65	U012MN23FD30
1981 762 65	U012MN26FD30
1981 838 65	U012MN29FD30
UNFINISHED	
1981 610 35	12M610-0
1981 686 35	12M686-0
1981 762 35	12M762-0
1981 838 35	12M838-0
2030 725 60	12M725-0
2030 825 60	12M825-0

Height/Width/ Thickness mm	Product Code
UNFINISHED	
1981 610 35	U012MN20
1981 686 35	U012MN23
1981 762 35	U012MN26
1981 838 35	U012MN29
UNFINISHED FIRE DOORS	
1981 610 65	U012MN20FD30
1981 686 65	U012MN23FD30
1981 762 65	U012MN26FD30
1981 838 65	U012MN29FD30



12-6 VM OAK
Clear bevelled safety glass
Clear fire glass

Height/Width/ Thickness mm	Product Code
PRE-FINISHED	
1981 610 35	12VM610-0-0
1981 686 35	12VM686-0-0
1981 762 35	12VM762-0-0
1981 838 35	12VM838-0-0
2030 625 60	12VM625-0-0
2030 725 60	12VM725-0-0
2030 825 60	12VM825-0-0
PRE-FINISHED FIRE DOORS	
1981 686 65	12VM686-0-0
1981 762 65	12VM762-0-0
1981 838 65	12VM838-0-0
UNFINISHED	
1981 610 35	U012VM610-0
1981 686 35	U012VM686-0
1981 762 35	U012VM762-0
1981 838 35	U012VM838-0
UNFINISHED FIRE DOORS	
1981 686 65	U012VM686-0-0
1981 762 65	U012VM762-0-0
1981 838 65	U012VM838-0-0



E14M OAK

Height/Width/ Thickness mm	Product Code
PRE-FINISHED	
1981 610 35	E14M610-0-0
1981 686 35	E14M686-0-0
1981 762 35	E14M762-0-0
1981 838 35	E14M838-0-0
PRE-FINISHED FIRE DOORS	
1981 686 65	E14M686-0-0
1981 762 65	E14M762-0-0
1981 838 65	E14M838-0-0
UNFINISHED	
1981 610 35	U0E14MN20
1981 686 35	U0E14MN23
1981 762 35	U0E14MN26
1981 838 35	U0E14MN29
UNFINISHED FIRE DOORS	
1981 686 65	U0E14MN23FD30
1981 762 65	U0E14MN26FD30
1981 838 65	U0E14MN29FD30



E14-2VM OAK*
Unglazed

Height/Width/ Thickness mm	Product Code
UNFINISHED	
1981 686 35	U0E14-2VMN23
1981 762 35	U0E14-2VMN26
1981 838 35	U0E14-2VMN29

*Only available as unfinished from stock, fully finished available to order.

Timber veneers are a natural material and variations in the colour and grainings should be expected. Colours depicted are representative only.



E16MN OAK*

Height/Width/ Thickness mm	Product Code
UNFINISHED	
1981 610 35	U0E16MN20
1981 686 35	U0E16MN23
1981 762 35	U0E16MN26
1981 838 35	U0E16MN29
UNFINISHED FIRE DOORS	
1981 686 65	U0E16MN23FD30
1981 762 65	U0E16MN26FD30
1981 838 65	U0E16MN29FD30



11-8VN OAK*
Clear bevelled safety glass

Height/Width/ Thickness mm	Product Code
UNFINISHED	
1981 686 35	U0E118V866
1981 762 35	U0E118V762
1981 838 35	U0E118V838



- Real oak veneers
- Contemporary flush door designs
- Supplied fully finished
- Bi-fold option
- FD30 fire doors



Bespoke Options:
Brisa doors are available in alternative timber veneers and special sizes, as well as many other design styles. Rebated door pairs are available to order.
Call our Sales team on **01283 554 197** to discuss your requirements.

MISTRAL OAK

With a beautiful varnish finish, the oak veneers of our Brisa range really do exude class and style. Choose from a selection of designs that incorporate alternating horizontal and vertical veneers to create a subtle, yet eye catching look.

Perfect for modern and classic interiors, you will be impressed by the quality of this top selling range and the favourable price point.

Our Mistral Oak Bi-fold door is easy to install into an existing frame, supplied ready hinged with pivots, brackets and a sliding track.

Timber veneers are a natural material and variations in the colour and graining should be expected. Colours depicted are representative only.

Mistral also available as:



MISTRAL OAK BI-FOLD**

Height/Width/Thickness mm	Product Code
1981 762 35	OMISB24

**Please note that the door opening size is listed and that the actual bi-fold supplied is slightly smaller to accommodate tracking.



WHITE MISTRAL
see page 61



MISTRAL WALNUT
see page 23



MISTRAL OAK
Grooved

Height/Width/Thickness mm	Product Code
1981 520 35	OMIS19
1981 610 35	OMIS20
1981 686 35	OMIS23
1981 762 35	OMIS24
1981 838 35	OMIS29
2060 526 60	OMIS26
2060 626 60	OMIS26
2060 726 60	OMIS26
2060 826 60	OMIS26

Height/Width/Thickness mm	Product Code
1981 686 66	OMIS23FD30
1981 762 66	OMIS26FD30
1981 838 66	OMIS29FD30
2060 726 66	OMIS26FD30
2060 826 66	OMIS26FD30



MISTRAL OAK GLAZED
Clear safety glass, Grooved, Flush beaded

Height/Width/Thickness mm	Product Code
1981 686 35	OMIS230
1981 762 35	OMIS260
1981 838 35	OMIS290
2060 626 60	OMIS260
2060 726 60	OMIS260
2060 826 60	OMIS260



SIROCCO
Grooved

Height/Width/Thickness mm	Product Code
1981 610 35	OSIR20
1981 686 35	OSIR23
1981 762 35	OSIR24
1981 838 35	OSIR29

PRE-FINISHED FIRE DOORS

1981 686 66	OSIR23FD30
1981 762 66	OSIR26FD30
1981 838 66	OSIR29FD30



SIROCCO GLAZED
Clear safety glass, Grooved, Flush beaded

Height/Width/Thickness mm	Product Code
1981 686 35	OSIR230
1981 762 35	OSIR260
1981 838 35	OSIR290



OSTRIA

Height/Width/Thickness mm	Product Code
1981 610 35	OOST20
1981 686 35	OOST23
1981 762 35	OOST26
1981 838 35	OOST29
PRE-FINISHED FIRE DOORS	
1981 686 66	OOST23FD30
1981 762 66	OOST26FD30
1981 838 66	OOST29FD30



OSTRIA GLAZED
Clear safety glass, Flush beaded

Height/Width/Thickness mm	Product Code
1981 686 35	OOST230
1981 762 35	OOST260
1981 838 35	OOST290

- Real oak veneers with light and dark coloured inlays
- Supplied fully finished
- Bespoke options available
- BWF CERTIFIRE FD30 fire doors for selected door designs



Bespoke Options:

Roma door designs are available in alternative timber veneers, special sizes and rebated door pairs can be made to order.

Call our Sales team on **01283 554197** to discuss your requirements.

VENUS

shown with Roller handles, see page 75

Discrete style and class are what make our Roma range of oak flush door designs the ideal choice for a modern interior.

Whether you prefer dark or light coloured real wood inlays, you are spoilt for choice with the design options available. The stunning oak veneers are accentuated with a luxury varnish finish, which really adds a touch of elegance to these beautiful doors.

Timber veneers are a natural material and variations in the colour and graining should be expected. Colours depicted are representative only.

Roma continues over leaf



CEYLON
Oak grooves and Ash inlay

Height/Width/ Thickness mm	Product Code
PRE-FINISHED	
1981 610 35	CEY20
1981 686 35	CEY23
1981 762 35	CEY26
1981 838 35	CEY29
PRE-FINISHED FIRE DOORS	
1981 686 66	CEY23FD30
1981 762 66	CEY26FD30
1981 838 66	CEY29FD30



JUNO
Light wood inlay
Clear bevelled safety glass

Height/Width/ Thickness mm	Product Code
PRE-FINISHED	
1981 686 35	0JUN23
1981 762 35	0JUN26
1981 838 35	0JUN29



DIANA
Light wood inlay

Height/Width/ Thickness mm	Product Code
PRE-FINISHED	
1981 610 35	0DIA20
1981 686 35	0DIA23
1981 762 35	0DIA26
1981 838 35	0DIA29
PRE-FINISHED FIRE DOORS	
1981 762 66	0DIA26FD30
1981 838 66	0DIA29FD30



MINERVA
Light wood inlay
Clear bevelled safety glass

Height/Width/ Thickness mm	Product Code
PRE-FINISHED	
1981 686 35	0MIN23
1981 762 35	0MIN26
1981 838 35	0MIN29



RHODESIA
Oak grooves and Ash inlay
Clear safety glass

Height/Width/ Thickness mm	Product Code
PRE-FINISHED	
1981 686 35	ERRH023
1981 762 35	ERRH026
1981 838 35	ERRH029



VENUS
Light wood inlay

Height/Width/ Thickness mm	Product Code
PRE-FINISHED	
1981 610 35	OVEN20
1981 686 35	OVEN23
1981 762 35	OVEN26
1981 838 35	OVEN29
PRE-FINISHED FIRE DOORS	
1981 762 66	OVEN26FD30
1981 838 66	OVEN29FD30



LUCINA
Light wood inlay

Height/Width/ Thickness mm	Product Code
PRE-FINISHED	
1981 610 35	OLUC20
1981 686 35	OLUC23
1981 762 35	OLUC26
1981 838 35	OLUC29
PRE-FINISHED FIRE DOORS	
1981 762 66	OLUC26FD30
1981 838 66	OLUC29FD30



BLenheim



CHARTWELL

Perfect for large developments, self-builds or home refurbishments and supported by our flexible bespoke options service, you will have the peace of mind that we can help with any special requirements.

Supplied with solid timber lippings to help accommodate reduction to fit. Plus, the Blenheim offers a glazed fire door option from stock.



CHARTWELL†
Wenge Inlay

Height/Width/ Thickness mm	Product Code
PRE-FINISHED	
1981 533 35	CCHA19
1981 610 35	CCHA20
1981 686 35	CCHA23
1981 762 35	CCHA26
1981 838 35	CCHA29



WENGE INLAY

Height/Width/ Thickness mm	Product Code
PRE-FINISHED FIRE DOORS	
1981 686 66	COHA23FD30
1981 762 66	COHA26FD30
1981 838 66	COHA29FD30



BLenheim†
Wenge Inlay Clear Safety Glass or Clear Fire Safety on FD30

Height/Width/ Thickness mm	Product Code
PRE-FINISHED	
1981 686 35	CBLE23
1981 762 35	CBLE26
1981 838 35	CBLE29
PRE-FINISHED FIRE DOORS	
1981 762 66	CBLE26FD30
1981 838 66	CBLE29FD30



CLEMENTINE†
Walnut Inlay

Height/Width/ Thickness mm	Product Code
PRE-FINISHED	
1981 533 35	COLE19
1981 610 35	COLE20
1981 686 35	COLE23
1981 762 35	COLE26
1981 838 35	COLE29



WALNUT INLAY

Height/Width/ Thickness mm	Product Code
PRE-FINISHED FIRE DOORS	
1981 686 66	CCL23FD30
1981 762 66	CCL26FD30
1981 838 66	CCL29FD30



SPENCER†
Walnut Inlay Clear Safety Glass

Height/Width/ Thickness mm	Product Code
PRE-FINISHED	
1981 686 35	CSPE23
1981 762 35	CSPE26
1981 838 35	CSPE29

Doors marked with † do not have BWF-CERTIFIRE certification

Timber veneers are a natural material and variations in the colour and graining should be expected. Colours depicted are representative only.

Add the finishing touch with a latch pack, see page 75.



SMARTLATCH



Timber accessories Architraves, linings and skirting. See page 76.



Bespoke Options:

Elements door designs are available in alternative timber veneers, special sizes and rebated door pairs can be made to order.

Call our Sales team on **01283 554197** to discuss your requirements.

SOL

- Real oak veneers with dark coloured grooves
- Supplied fully finished
- Bespoke options available
- BWF CERTIFIRE FD30 fire doors (glazed FD30 available to order)

Stunning oak doors with a difference! Enhance your home interior and choose from one of the attractive curvaceous designs in our Elements range.

Enhanced with dark coloured grooves, the beautiful oak veneers come complete with a luxury varnish finish. The quality construction of these doors incorporates matching concealed lippings to accommodate reduction to fit.



ARCS
Grooved

Height/Width/ Thickness mm	Product Code
PRE-FINISHED	
1981 610 35	EARC20
1981 686 35	EARC23
1981 762 35	EARC26
1981 838 35	EARC29
PRE-FINISHED FIRE DOORS	
1981 686 66	EARC23FD30
1981 762 66	EARC26FD30
1981 838 66	EARC29FD30

Timber accessories
Architraves, linings
and skirting.
See page 76.



ARCS GLAZED
Clear safety glass, Grooved

Height/Width/ Thickness mm	Product Code
PRE-FINISHED	
1981 686 35	EARC23G
1981 762 35	EARC26G
1981 838 35	EARC29G

Timber veneers are a natural material and variations in the colour and graining should be expected. Colours depicted are representative only.



AGUA
Grooved

Height/Width/ Thickness mm	Product Code
PRE-FINISHED	
1981 610 35	EAGU20
1981 686 35	EAGU23
1981 762 35	EAGU26
1981 838 35	EAGU29
PRE-FINISHED FIRE DOORS	
1981 686 66	EAGU23FD30
1981 762 66	EAGU26FD30
1981 838 66	EAGU29FD30



AGUAGLAZED
Clear safety glass, Grooved

Height/Width/ Thickness mm	Product Code
PRE-FINISHED	
1981 686 35	EAGU23G
1981 762 35	EAGU26G
1981 838 35	EAGU29G



SOL
Grooved

Height/Width/ Thickness mm	Product Code
PRE-FINISHED	
1981 610 35	ESOL20
1981 686 35	ESOL23
1981 762 35	ESOL26
1981 838 35	ESOL29
PRE-FINISHED FIRE DOORS	
1981 686 66	ESOL23FD30
1981 762 66	ESOL26FD30
1981 838 66	ESOL29FD30



SOL GLAZED
Clear safety glass, Grooved

Height/Width/ Thickness mm	Product Code
PRE-FINISHED	
1981 686 35	ESOL23G
1981 762 35	ESOL26G
1981 838 35	ESOL29G



- Real oak veneers
- Supplied fully finished
- Solid core construction
- FD30 fire doors for solid and selected glazed models

Stylish, contemporary and affordable are just a few words that describe one of our best selling door styles, the River Oak Tigris.

Perfect for modern and classic interiors, the subtle grooved panel design is popular with discerning builder developers, self-builders and renovators alike. The beautiful varnish finish accentuates the real oak veneers to create a truly stunning look. Partnered with three delightful glazed options and a flexible bespoke options service, you will be confident in finding the ideal doors for your project.

Timber veneers are a natural material and variations in the colour and graining should be expected. Colours depicted are representative only.

Bespoke Options: River Oak Modern door designs are available in alternative timber veneers, special sizes and rebated door pairs can be made to order.

Call our Sales team on **01283 554197** to discuss your requirements.

Rebated Door Pairs can be ordered from stock with a short lead time for Tigris and Medina 686mm & 762 mm. See page 12.



TIGRIS

Add the finishing touch with a latch pack, see page 75.



SMARTLATCH



MEDINA
Clear diamond cut safety glass



EMERALD
Clear safety glass or clear fire safety glass on FD30



BELA
Clear safety glass

Height/Width/Thickness mm	Product Code	Height/Width/Thickness mm	Product Code
PRE-FINISHED			
1981 533 35	01S119	1981 533 44	01S119 FD30
1981 610 35	01S120	1981 610 44	01S120 FD30
1981 686 35	01S123	1981 686 44	01S123 FD30
1981 762 35	01S124	1981 762 44	01S124 FD30
1981 838 35	01S129	1981 838 44	01S129 FD30
2040 626 40	01S1626	2040 726 44	01S172 6 FD30
2040 726 40	01S1726	2040 826 44	01S182 6 FD30
2040 826 40	01S1826	2040 926 44	01S192 6 FD30

Height/Width/Thickness mm	Product Code	Height/Width/Thickness mm	Product Code
PRE-FINISHED FIRE DOORS			
1981 533 44	01S119 FD30	1981 610 44	01S120 FD30
1981 686 44	01S123 FD30	1981 762 44	01S124 FD30
1981 838 44	01S129 FD30	2040 726 44	01S172 6 FD30
2040 826 44	01S182 6 FD30	2040 926 44	01S192 6 FD30

Height/Width/Thickness mm	Product Code	Height/Width/Thickness mm	Product Code
PRE-FINISHED			
1981 686 35	01MR23 0	1981 762 35	01MR26 0
1981 838 35	01MR29 0	2040 626 40	01MR26 6 0
2040 726 40	01MR27 6 0	2040 826 40	01MR28 6 0

Height/Width/Thickness mm	Product Code	Height/Width/Thickness mm	Product Code
PRE-FINISHED FIRE DOORS			
1981 686 35	01MR23 0	1981 762 35	01MR26 0
1981 838 35	01MR29 0	2040 626 40	01MR26 6 0
2040 726 40	01MR27 6 0	2040 826 40	01MR28 6 0

Height/Width/Thickness mm	Product Code	Height/Width/Thickness mm	Product Code
PRE-FINISHED			
1981 610 35	01BL20	1981 686 35	01BL23
1981 762 35	01BL26	1981 838 35	01BL29

River Oak Cottage

- New designs for 2016
- Real oak veneers
- Fully finished and unfinished options
- Solid core construction
- Bi-fold options
- FD30 fire doors



THAMES ORIGINAL

Bespoke Options:

Our Thames Original door design is available in alternative timber veneers and special sizes can be made to order.

Call our Sales team on 01283 554197 to discuss your requirements.

Oak cottage style doors are perfect for a variety of projects, from barn conversions through to modern new builds. The aesthetically pleasing boarded appearance is one of the UK's most popular door styles, suiting both traditional and contemporary settings.

There are many different versions of this style of door on the market and at first glance they do look very similar. Take some time to look at the construction, as different methods are used to meet various price points. The close up images below highlight the variances between the three options we offer, so whatever your budget there will be a River Oak Cottage door for you.

Our Bi-fold doors are easy to install in to existing frames, supplied ready hinged with pivots, brackets and a sliding track.

Rebated Door Pairs can be ordered from stock with a short lead time for the Yoxall and Tutbury. See page 12



Timber veneers are a natural material and variations in the colour and grainings should be expected. Colours depicted are representative only.

Doors marked V Many of our River Oak Cottage doors are also available with full varnish finish from stock.

***Also available fully finished**

River Oak Cottage continues overleaf



THAMES ORIGINAL CLOSE UP DETAIL
The grooved centre panel is full door thickness



THAMES II CLOSE UP DETAIL
The centre grooved panel is recessed and is not as thick as the outer frame



YOXALL CLOSE UP DETAIL
A higher specification, this door is individually boarded not grooved



THAMES ORIGINAL*
Grooved face

Height/Width/ Thickness mm	Product Code
UNFINISHED	
1981 657 35	OTH116
1981 533 35	OTH119
1981 610 35	OTH120 ^V
1981 686 35	OTH123 ^V
1981 762 35	OTH126 ^V
1981 838 35	OTH129 ^V
2040 626 60	OTH166 ^V
2040 726 60	OTH1726 ^V
2040 826 60	OTH1826 ^V
2040 926 60	OTH1926 ^V
UNFINISHED FIRE DOORS	
1981 610 66	OTH120 ^{FD30} ^V
1981 686 66	OTH123 ^{FD30} ^V
1981 762 66	OTH126 ^{FD30} ^V
1981 838 66	OTH129 ^{FD30} ^V
2040 726 66	OTH1726 ^{FD30} ^V
2040 826 66	OTH1826 ^{FD30} ^V
2040 926 66	OTH1926 ^{FD30} ^V



THAMES ORIGINAL BI-FOLD**
Grooved face

Height/Width/ Thickness mm	Product Code
UNFINISHED	
1981 762 35	OTH1826

**Please note that the door opening sizes are listed and that the actual bi-folds supplied are slightly smaller to accommodate tracking.



THAMES II*
Recessed grooved face

Height/Width/ Thickness mm	Product Code
UNFINISHED	
1981 657 35	MK20TH16
1981 533 35	MK20TH19
1981 610 35	MK20TH20 ^V
1981 686 35	MK20TH23 ^V
1981 762 35	MK20TH26 ^V
1981 838 35	MK20TH29 ^V
2040 626 60	MK20TH166
2040 726 60	MK20TH1726
2040 826 60	MK20TH1826
2040 926 60	MK20TH1926
UNFINISHED FIRE DOORS	
1981 610 66	MK20TH20 ^{FD30} ^V
1981 686 66	MK20TH23 ^{FD30} ^V
1981 762 66	MK20TH26 ^{FD30} ^V
1981 838 66	MK20TH29 ^{FD30} ^V



THAMES II BI-FOLD**
Recessed grooved face

Height/Width/ Thickness mm	Product Code
UNFINISHED	
1981 762 35	MK20TH1826



YOXALL*
Individually boarded

Height/Width/ Thickness mm	Product Code
UNFINISHED	
1981 657 35	OY0K16 ^V
1981 533 35	OY0K19 ^V
1981 610 35	OY0K20 ^V
1981 686 35	OY0K23 ^V
1981 762 35	OY0K26 ^V
1981 838 35	OY0K29 ^V
2040 626 60	OY0K166
2040 726 60	OY0K1726
2040 826 60	OY0K1826
2040 926 60	OY0K1926
UNFINISHED FIRE DOORS	
1981 610 66	OY0K20 ^{FD30} ^V
1981 686 66	OY0K23 ^{FD30} ^V
1981 762 66	OY0K26 ^{FD30} ^V
1981 838 66	OY0K29 ^{FD30} ^V
2040 726 66	OY0K1726 ^{FD30} ^V
2040 826 66	OY0K1826 ^{FD30} ^V
2040 926 66	OY0K1926 ^{FD30} ^V

All images are shown finished for illustrative purposes only



THAMES II



YOXALL

Bring some light in on the situation and complement your boarded style doors with one of our glazed options. Whether you prefer full or part glazed, there is a style to help you achieve that perfect design theme.



THAMES ETCHED GLASS
Clear glass with etched lines



THAMES 1 LIGHT*
Clear safety glass with etched lines



THAMES II 1/2 LIGHT
Clear safety glass with etched lines, Recessed grooved panel



THAMES 6 LIGHT
Clear safety glass, Full thickness grooved panel



TUTBURY*
Individually boarded
Clear bevelled safety glass



NEW CHERWELL



NEW CHERWELL GLAZED
Clear safety glass



Timber accessories
Architraves, linings
and skirting.
See page 76.

Add the finishing touch with a latch pack, see page 75.



SMARTLATCH

Doors marked v

Many of our River Oak Cottage doors are also available with full varnish finish from stock.

*Also available fully finished

Height/Width/ Thickness mm	Product Code	Product Code
1981 686 35	MIK20THA1L23 ^v	UNFINISHED
1981 762 35	MIK20THA1L26 ^v	UNFINISHED
1981 838 35	MIK20THA1L29 ^v	UNFINISHED
2060 626 60	OTH1A1L626 ^v	
2060 726 60	OTH1A1L726 ^v	
2060 826 60	OTH1A1L826 ^v	

Height/Width/ Thickness mm	Product Code	Product Code
1981 686 35	MIK20THAVL23	UNFINISHED
1981 762 35	MIK20THAVL26	UNFINISHED
1981 838 35	MIK20THAVL29	UNFINISHED
2060 626 60	OTH1A6L26	
2060 726 60	OTH1A6L726	
2060 826 60	OTH1A6L826	

Height/Width/ Thickness mm	Product Code	Product Code
1981 686 35	OTH1A6L23	UNFINISHED
1981 762 35	OTH1A6L26	UNFINISHED
1981 838 35	OTH1A6L29	UNFINISHED
2060 626 60	OTH1A6L626	
2060 726 60	OTH1A6L726	
2060 826 60	OTH1A6L826	

Height/Width/ Thickness mm	Product Code	Product Code
1981 686 35	OTUT23 ^v	UNFINISHED
1981 762 35	OTUT26 ^v	UNFINISHED
1981 838 35	OTUT29 ^v	UNFINISHED

Height/Width/ Thickness mm	Product Code	Product Code
1981 610 35	VOCHE20	PRE-FINISHED
1981 686 35	VOCHE23	PRE-FINISHED
1981 762 35	VOCHE26	PRE-FINISHED
1981 838 35	VOCHE29	PRE-FINISHED
1981 686 66	VOCHE23FD30	PRE-FINISHED FIRE DOORS
1981 762 66	VOCHE26FD30	PRE-FINISHED FIRE DOORS
1981 838 66	VOCHE29FD30	PRE-FINISHED FIRE DOORS

Height/Width/ Thickness mm	Product Code	Product Code
1981 686 35	VOCHE23G	PRE-FINISHED
1981 762 35	VOCHE26G	PRE-FINISHED
1981 838 35	VOCHE29G	PRE-FINISHED

All images are shown finished for illustrative purposes only.

Timber veneers are a natural material and variations in the colour and graining should be expected. Colours depicted are representative only.



DARWEN

- Real oak veneers
- Prepared for but not including varnish finish
- Solid core construction
- FD30 fire doors

A delightful selection of classic oak veneered door designs, which are the perfect complement for any style theme. The sheer quality and consistency of this range of doors have earned it an excellent reputation.

Supplied unfinished to allow for a choice of varnish, the solid engineered cores offer extra stability that is often not found with similar alternatives.



Timber accessories
Architraves, linings
and skirting.
See page 76.



All images are shown finished for illustrative purposes only.

Timber veneers are a natural material and variations in the colour and graining should be expected. Colours depicted are representative only.

River Oak Traditional comes in a natural coat of inlays overleaf

Add the finishing touch with a latch pack, see page 75.



SMARTLATCH



EDEN
Flat panels

Height/Width/ Thickness mm	Product Code
UNFINISHED	
1981 810 35	OEDE20
1981 886 35	OEDE23
1981 762 35	OEDE26
1981 838 35	OEDE29
2060 826 60	OEDE26 FD30
2060 726 60	OEDE27 FD30
2060 826 60	OEDE28 FD30

Height/Width/ Thickness mm	Product Code
UNFINISHED FIRE DOORS	
1981 886 66	OEDE23 FD30
1981 762 66	OEDE26 FD30
1981 838 66	OEDE29 FD30
2060 726 66	OEDE27 AF D30
2060 826 66	OEDE28 AF D30



DARWEN
Clear safety glass

Height/Width/ Thickness mm	Product Code
UNFINISHED	
1981 886 35	ODAR23 G
1981 762 35	ODAR26 G
1981 838 35	ODAR29 G
2060 726 60	ODAR27 G
2060 826 60	ODAR28 G



MERSEY
Raised shaped panels

Height/Width/ Thickness mm	Product Code
UNFINISHED	
1981 810 35	OMER20
1981 886 35	OMER23
1981 762 35	OMER26
1981 838 35	OMER29
UNFINISHED FIRE DOORS	
1981 762 66	OMER27 FD30
1981 838 66	OMER28 FD30



HUMBER
Clear safety glass

Height/Width/ Thickness mm	Product Code
UNFINISHED	
1981 762 35	OHUM26
1981 838 35	OHUM29



DERWENT

Add warmth and a touch of class to your home with panelled style oak veneered doors. Supplied natural, you can choose your preferred varnish finish to tone in with your interior design theme.

Timber accessories
Architraves, linings
and skirting.
See page 76.



All images are shown finished for illustrative purposes only.

Timber veneers are a natural material and variations in the colour and graining should be expected. Colours depicted are representative only.



TRENT
Raised shaped panels

Height/Width/ Thickness mm	Product Code	Height/Width/ Thickness mm	Product Code
UNFINISHED			
1981 657 35	OTRE16	1981 686 66	OTRE23FD30
1981 533 35	OTRE19	1981 762 66	OTRE26FD30
1981 610 35	OTRE20	1981 838 66	OTRE29FD30
1981 686 35	OTRE23		
1981 762 35	OTRE26		
1981 838 35	OTRE29		
2032 813 35	OTRE28		

Add the finishing touch with a latch pack, see page 75.



SMARTLATCH



CHURNET
Clear and leaded safety glass

Height/Width/ Thickness mm	Product Code
UNFINISHED	
1981 686 35	OCHUDL23
1981 762 35	OCHUDL26
1981 838 35	OCHUDL29



DOVE
Clear bevelled safety glass
Available as pairs (rotated meeting
sides, left hand open away)

Height/Width/ Thickness mm	Product Code
UNFINISHED	
1981 610 35	000V20
1981 686 35	000V23
1981 762 35	000V26
1981 838 35	000V29
DOVE PAIRS UNFINISHED	
1981 1219 35	000V40
1981 1372 35	000V46
1981 1524 35	000V50



DERWENT
Flat panels of quarter-sawn oak

Height/Width/ Thickness mm	Product Code
UNFINISHED	
1981 610 35	000R20
1981 686 35	000R23
1981 762 35	000R26
1981 838 35	000R29
2032 813 35	000R28
UNFINISHED FIRE DOORS	
1981 686 66	000R23FD30
1981 762 66	000R26FD30
1981 838 66	000R29FD30



SEVERN
Clear safety glass

Height/Width/ Thickness mm	Product Code
UNFINISHED	
1981 686 35	0SEV23
1981 762 35	0SEV26
1981 838 35	0SEV29



FUJI

Useful Tip:
When choosing a wood finish – rather than applying a water based product, we advise using a good quality solvent based finish.

- Real oak veneers
- Shaker panel designs
- Prepared for but not including varnish finish
- Solid core construction
- Bi-fold options
- FD30 fire doors

A blend of modern and traditional, these beautiful oak shaker style doors are of exceptional quality and price.

Outstanding, compared to similar alternatives on the market, all of the doors in our Montana range are manufactured with a solid engineered core and lipped with 15mm solid oak to allow for on site adjustment. Supplied unvarnished to allow for a choice of finish.

Montana Bi-fold doors are easy to install into existing frames, supplied ready hinged with pivots, brackets and a sliding track.

Timber accessories
Architraves, linings
and skirting.
See page 76.



All images are shown finished for illustrative purposes only.

Rebated Door Pairs can be ordered from stock with a short lead time. See page 12



Add the finishing touch with a latch pack, see page 75.



Timber veneers are a natural material and variations in the colour and graining should be expected. Colours depicted are representative only.

Montana continues over leaf



SNOWDON

Height/Width/Thickness mm	Product Code
1981 610 35	OSN 020
1981 686 35	OSN 023
1981 762 35	OSN 026
1981 838 35	OSN 029
20x0 626 60	OSN 0626
20x0 726 60	OSN 0726
20x0 826 60	OSN 0826

Height/Width/Thickness mm	Product Code
1981 686 66	OSN023F030
1981 762 66	OSN026F030
1981 838 66	OSN029F030
20x0 726 66	OSN0726FD30
20x0 826 66	OSN0826FD30



SNOWDON BI-FOLD**

Height/Width/Thickness mm	Product Code
1981 762 35	OSN08F26

**Please note that the door opening size is listed and that the actual bi-fold supplied is slightly smaller to accommodate tracking.



NEVIS
Clear safety glass

Height/Width/Thickness mm	Product Code
1981 686 35	ONEV23
1981 762 35	ONEV26
1981 838 35	ONEV29
20x0 726 60	ONEV726
20x0 826 60	ONEV826



RUSHMORE

Height/Width/Thickness mm	Product Code
1981 610 35	ORUS20
1981 686 35	ORUS23
1981 762 35	ORUS26
1981 838 35	ORUS29
UNFINISHED FIRE DOORS	
1981 686 66	ORUS23FD30
1981 762 66	ORUS26FD30
1981 838 66	ORUS29FD30



RUSHMORE



EIGER

Classic oak shaker style doors are a popular choice that never date. Our Montana doors are supplied unfinished ready for your choice of varnish – ideal if you would like to co-ordinate the wood finishes throughout your home.

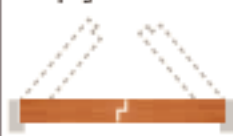
Take advantage of the matching bi-fold door options, perfect for when space is at a premium. They are easy to install into existing frames, supplied ready hinged with pivots, brackets and a sliding track.

Add the finishing touch with a latch pack, see page 75.



SMARTLATCH

Rebated Door Pairs can be ordered from stock with a short lead time. See page 12



ETNA

Height/Width/Thickness mm	Product Code
1981 610 35	0ETN20
1981 685 35	0ETN23
1981 762 35	0ETN26
1981 838 35	0ETN29
UNFINISHED FIRE DOORS	
1981 685 66	0ETN23FD30
1981 762 66	0ETN26FD30
1981 838 66	0ETN29FD30



ETNA BI-FOLD**

Height/Width/Thickness mm	Product Code
1981 762 35	0ETNB26

**Please note that the door opening sizes are listed and that the actual bi-folds supplied are slightly smaller to accommodate bracking.



FUJI
Clear safety glass

Height/Width/Thickness mm	Product Code
1981 685 35	0FUJ23
1981 762 35	0FUJ26
1981 838 35	0FUJ29



FUJI BI-FOLD**
Clear safety glass

Height/Width/Thickness mm	Product Code
1981 762 35	0FUJB26



EIGER

Height/Width/Thickness mm	Product Code
1981 610 35	0EIG20
1981 685 35	0EIG23
1981 762 35	0EIG26
1981 838 35	0EIG29
UNFINISHED FIRE DOORS	
1981 685 66	0EIG23FD30
1981 762 66	0EIG26FD30
1981 838 66	0EIG29FD30



MATTERHORN
Clear safety glass

Height/Width/Thickness mm	Product Code
1981 685 35	0MAT23
1981 762 35	0MAT26
1981 838 35	0MAT29

Timber accessories Architraves, linings and skirting. See page 76.



All images are shown finished for illustrative purposes only.

Timber veneers are a natural material and variations in the colour and grainings should be expected. Colours depicted are representative only.



CHARNWOOD

- Real oak veneers
- Supplied fully finished
- Solid core construction
- FD30 fire doors

Traditional raised panel oak veneered doors that are perfect for classic and period style interiors.

Benefit from the quality solid core construction and save yourself some time, as our Simply Oak doors are supplied complete with a beautiful varnish finish. Compared to similar alternatives on the market, you will certainly receive more for your money.

Timber veneers are a natural material and variations in the colour and graining should be expected. Colours depicted are representative only.



ARDEN
Clear safety glass

Height/Width/ Thickness mm	Product Code
PRE-FINISHED	
1981 762 35	V50AL1P260
1981 838 35	V50AL1P290



Timber accessories
Architraves, linings
and skirting.
See page 76.

Height/Width/ Thickness mm	Product Code
PRE-FINISHED	
1981 610 35	V50AP20
1981 686 35	V50AP23
1981 762 35	V50AP26
1981 838 35	V50AP29
PRE-FINISHED FIRE DOORS	
1981 686 66	V50AP23FD30
1981 762 66	V50AP26FD30
1981 838 66	V50AP29FD30



CHARNWOOD

Height/Width/ Thickness mm	Product Code
PRE-FINISHED	
1981 523 35	V502P19
1981 610 35	V502P20
1981 686 35	V502P23
1981 762 35	V502P26
1981 838 35	V502P29
PRE-FINISHED FIRE DOORS	
1981 686 66	V502P23FD30
1981 762 66	V502P26FD30
1981 838 66	V502P29FD30



SHERWOOD

Height/Width/ Thickness mm	Product Code
PRE-FINISHED	
1981 610 35	V50AP20
1981 686 35	V50AP23
1981 762 35	V50AP26
1981 838 35	V50AP29
PRE-FINISHED FIRE DOORS	
1981 686 66	V50AP23FD30
1981 762 66	V50AP26FD30
1981 838 66	V50AP29FD30



GRIZEDALE

Height/Width/ Thickness mm	Product Code
PRE-FINISHED	
1981 610 35	V50AP20
1981 686 35	V50AP23
1981 762 35	V50AP26
1981 838 35	V50AP29
PRE-FINISHED FIRE DOORS	
1981 686 66	V50AP23FD30
1981 762 66	V50AP26FD30
1981 838 66	V50AP29FD30



DEAN
Clear safety glass

Height/Width/ Thickness mm	Product Code
PRE-FINISHED	
1981 686 35	V50AL2P230
1981 762 35	V50AL2P260
1981 838 35	V50AL2P290



GISBURN
Clear safety glass

Height/Width/ Thickness mm	Product Code
PRE-FINISHED	
1981 686 35	V501BL230
1981 762 35	V501BL260
1981 838 35	V501BL290



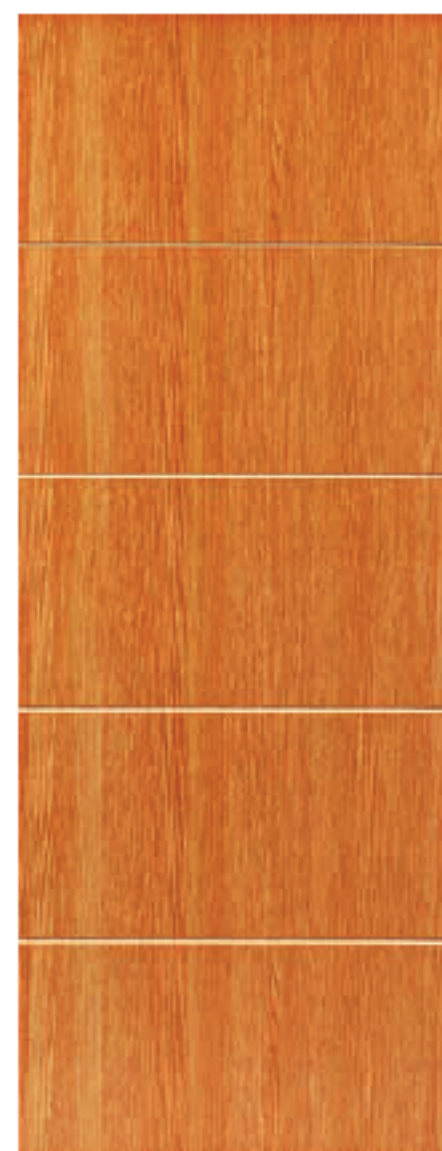
- Light oak grained painted finish
- Contemporary flush grooved design
- BWF CERTIFIRE FD30 fire doors (glazed FD30 available to order)
- FSC® chain of custody certified

Contemporary oak effect flush doors enhanced with horizontal grooves.

If you are looking for an oak internal door but do not want to pay the price for real timber veneers, then our painted Gallery door range is the answer. It is hard to spot the difference, as the oak painted timber effect is so realistic. Finished with hardwearing paint varnish, the doors are constructed with painted pine lippings so that when planed during fitting, they can be restored by repainting.



LOUVRE



TATE

Timber accessories
Architraves, linings
and skirting.
See page 76.



Add the finishing touch with a
latch pack, see page 75.



Bespoke Options:

Gallery door designs are available in alternative painted finishes and special sizes can be made to order. Minimum quantity may apply.

Call our Sales team on **01283 554197** to discuss your requirements.

Colours depicted are
representative only



LOUVRE
Clear safety glass



Height/Width/ Thickness mm	Product Code	Height/Width/ Thickness mm	Product Code	Height/Width/ Thickness mm	Product Code
PRE-FINISHED					
1981 610 35	GTAT20	PRE-FINISHED FIRE DOORS		1981 685 35	GLOU23
1981 685 35	GTAT23	1981 685 44	GTAT23FD30	1981 762 35	GLOU26
1981 762 35	GTAT26	1981 762 44	GTAT26FD30	1981 838 35	GLOU29
1981 838 35	GTAT29	1981 838 44	GTAT29FD30		

Timber veneers are a natural material and variations in the colour and graining should be expected. Colours depicted are representative only.



Bespoke Options:
Special sizes and alternative groove patterns are available for some of our Limelight door designs.
Call our Sales team on **01283 554 197** to discuss your requirements.

ELEKTRA

- Coated with excellent white primer, ready for top coat finish
- MDF faces with feature grooves
- Bi-fold options
- FD30 fire doors for solid and glazed models
- FSC® chain of custody certified

Live in the Limelight and choose one of the contemporary door designs from this exceptionally popular and well established range.

A stylish collection of innovative grooved designs, alongside some of the most popular styles currently offered in natural veneers. Supplied complete with a premium white primer, ready for a top coat finish.

Limelight Bi-fold doors are easy to install into existing frames, supplied ready hinged with pivots, brackets and a sliding track.

Limelight continues over leaf



Mistral also available as:



MISTRAL OAK
see page 35



MISTRAL WALNUT
see page 23

Rebated Door Pairs can be ordered from stock with a short lead time.
See page 12



ELEKTRA

Height/Width/Thickness mm	Product Code
PRIMED	
1981 610 35	LELE20
1981 686 35	LELE23
1981 762 35	LELE26
1981 838 35	LELE29
PRIMED FIRE DOORS	
1981 686 66	LELE23FD30
1981 762 66	LELE26FD30
1981 838 66	LELE29FD30



ASTER

Height/Width/Thickness mm	Product Code
PRIMED	
1981 610 35	LAST20
1981 686 35	LAST23
1981 762 35	LAST26
1981 838 35	LAST29
PRIMED FIRE DOORS	
1981 686 66	LAST23FD30
1981 762 66	LAST26FD30
1981 838 66	LAST29FD30

MISTRAL WHITE

Height/Width/Thickness mm	Product Code
PRIMED	
1981 610 35	LMIS20
1981 686 35	LMIS23
1981 762 35	LMIS26
1981 838 35	LMIS29
20x0 526 60	LMIS526
20x0 626 60	LMIS626
20x0 726 60	LMIS726
20x0 826 60	LMIS826



MISTRAL WHITE BI-FOLD**

Height/Width/Thickness mm	Product Code
PRIMED FIRE DOORS	
1981 686 66	LMIS23FD30
1981 762 66	LMIS26FD30
1981 838 66	LMIS29FD30
20x0 726 66	LMIS726FD30
20x0 826 66	LMIS826FD30
20x0 926 66	LMIS926FD30

Height/Width/Thickness mm	Product Code
PRIMED	
1981 762 35	LMIS8F26

**Please note that the door opening size is listed and that the actual bi-fold supplied is slightly smaller to accommodate tracking.



MISTRAL WHITE GLAZED
Flush beaded,
Clear safety glass

Height/Width/Thickness mm	Product Code
PRIMED	
1981 686 35	LMIS230
1981 762 35	LMIS260
1981 838 35	LMIS290
20x0 626 60	LMIS6260
20x0 726 60	LMIS7260
20x0 826 60	LMIS8260

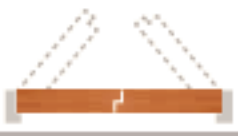


CRITERION

Height/Width/Thickness mm	Product Code
PRIMED	
1981 610 35	LOR020
1981 686 35	LOR023
1981 762 35	LOR026
1981 838 35	LOR029
PRIMED FIRE DOORS	
1981 686 66	LOR023FD30
1981 762 66	LOR026FD30
1981 838 66	LOR029FD30



Rebated Door Pairs can be ordered from stock with a short lead time. See page 12



Limelight continues over leaf

Take advantage of the fantastic glazing options in our Limelight range. From unique retro and oval style apertures, to subtle etched finishes, you can really make a statement with your glass doors. Plus, glazed fire doors are available from stock for both the 'Dominion' and 'Barbican'.

Limelight Bi-fold doors are easy to install into existing frames, supplied ready hinged with pivots, brackets and a sliding track.



IMPERIAL

Height/Width/Thickness mm	Product Code
1981 610 35	LIMP20
1981 686 35	LIMP23
1981 762 35	LIMP26
1981 838 35	LIMP29
PRIMED FIRE DOORS	
1981 686 66	LIMP23FD30
1981 762 66	LIMP26FD30
1981 838 66	LIMP29FD30



REGENT
Clear safety glass

Height/Width/Thickness mm	Product Code
1981 686 35	LRE023
1981 762 35	LRE026
1981 838 35	LRE029



APOLLO

Height/Width/Thickness mm	Product Code
1981 610 35	LAP020
1981 686 35	LAP023
1981 762 35	LAP026
1981 838 35	LAP029
PRIMED FIRE DOORS	
1981 686 66	LAP023FD30
1981 762 66	LAP026FD30
1981 838 66	LAP029FD30



BARBICAN
Etched safety glass or etched fire glass on FD30

Height/Width/Thickness mm	Product Code
1981 686 35	LSAR23
1981 762 35	LSAR26
1981 838 35	LSAR29
PRIMED FIRE DOORS	
1981 762 66	LSAR26FD30
1981 838 66	LSAR29FD30



ADELPHI

Height/Width/Thickness mm	Product Code
1981 610 35	LAD020
1981 686 35	LAD023
1981 762 35	LAD026
1981 838 35	LAD029
PRIMED FIRE DOORS	
1981 686 66	LAD023FD30
1981 762 66	LAD026FD30
1981 838 66	LAD029FD30



ADELPHI BI-FOLD**

Height/Width/Thickness mm	Product Code
1981 762 35	LAD026F26

**Please note that the door opening size is listed and that the actual bi-fold supplied is slightly smaller to accommodate tracking.



ARCADIAN
Clear safety glass

Height/Width/Thickness mm	Product Code
1981 686 35	LARC23
1981 762 35	LARC26
1981 838 35	LARC29



DOMINION
Etched safety glass or etched fire glass on FD30

Height/Width/Thickness mm	Product Code
1981 686 35	LDOM23
1981 762 35	LDOM26
1981 838 35	LDOM29
PRIMED FIRE DOORS	
1981 762 66	LDOM26FD30
1981 838 66	LDOM29FD30

Add the finishing touch with a latch pack, see page 75.





Bespoke Options:
Special sizes and alternative groove patterns are available for some of our Limelight door designs.
Call our Sales team on **01283 554197** to discuss your requirements.

APOLLO

Rebated Door Pairs
can be ordered from stock with a short lead time.
See page 12



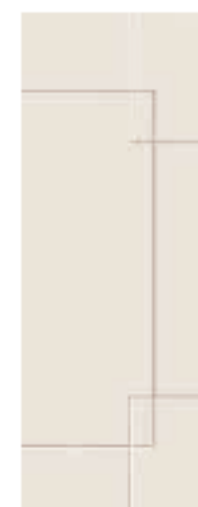
A vibrant combination of contemporary style and urban chic, the Limelight collection offers superb quality white primed doors.

White is most certainly on trend, as well as subtle tones of grey and taupe. Whatever your preference, the Limelight range is ideal as you have the option to paint the doors to suit your desired interior theme.



ECLIPSE

Height/Width/Thickness mm	Product Code
PRIMED	
1981 610 35	LECL20
1981 686 35	LECL23
1981 762 35	LECL26
1981 838 35	LECL29
PRIMED FIRE DOORS	
1981 686 66	LECL23FD30
1981 762 66	LECL26FD30
1981 838 66	LECL29FD30



FORTUNE

Height/Width/Thickness mm	Product Code
PRIMED	
1981 610 35	LFOR20
1981 686 35	LFOR23
1981 762 35	LFOR26
1981 838 35	LFOR29
PRIMED FIRE DOORS	
1981 686 66	LFOR23FD30
1981 762 66	LFOR26FD30
1981 838 66	LFOR29FD30



LYRIC

Height/Width/Thickness mm	Product Code
PRIMED	
1981 610 35	LLYR20
1981 686 35	LLYR23
1981 762 35	LLYR26
1981 838 35	LLYR29
PRIMED FIRE DOORS	
1981 686 66	LLYR23FD30
1981 762 66	LLYR26FD30
1981 838 66	LLYR29FD30



NOVELLO

Height/Width/Thickness mm	Product Code
PRIMED	
1981 610 35	LNOV20
1981 686 35	LNOV23
1981 762 35	LNOV26
1981 838 35	LNOV29
PRIMED FIRE DOORS	
1981 762 66	LNOV26FD30
1981 838 66	LNOV29FD30



ORACLE
Clear safety glass

Height/Width/Thickness mm	Product Code
PRIMED	
1981 686 35	LOR23
1981 762 35	LOR26
1981 838 35	LOR29



SAVOY

Height/Width/Thickness mm	Product Code
PRIMED	
1981 610 35	LSAV20
1981 686 35	LSAV23
1981 762 35	LSAV26
1981 838 35	LSAV29
PRIMED FIRE DOORS	
1981 762 66	LSAV26FD30
1981 838 66	LSAV29FD30



PHOENIX
Clear safety glass

Height/Width/Thickness mm	Product Code
PRIMED	
1981 686 35	LPHO23
1981 762 35	LPHO26
1981 838 35	LPHO29



Useful Tip:
For a better finish on any primed door, we recommend a light sanding to remove any nibs or marks prior to finishing.

AURORA GLAZED

- White primed, ready for top coat finish
- Shaker panel designs
- Bi-fold options
- FD30 fire doors
- FSC® chain of custody certified

An eclectic mix of stylish white primed interior doors based on a shaker style theme. Refreshingly modern yet effortlessly classic, the Calypso door collection is suitable for every type of interior.

For something a little different, why not try our iconic Aurora sunshine door – enjoy the contemporary slant that we've given this retro style made popular in the 1950's and 60's.

Calypso Bi-fold doors are easy to install into existing frames, supplied ready hinged with pivots, brackets and a sliding track.



AURORA

Height/Width/ Thickness mm	Product Code
1981 685 35	CAUR23
1981 762 35	CAUR26
1981 838 35	CAUR29



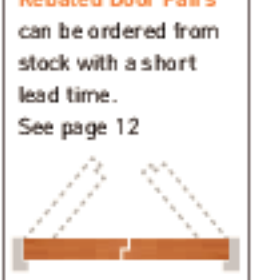
TOBAGO CHECK
Opaque chequered safety glass

Height/Width/ Thickness mm	Product Code
1981 762 35	CT08CHE26



TOBAGO
Clear safety glass

Height/Width/ Thickness mm	Product Code
1981 685 35	CT0823
1981 762 35	CT0826
1981 838 35	CT0829



Calypso continues over leaf



TOBAGO BI-FOLD**
Clear safety glass

Height/Width/ Thickness mm	Product Code
1981 762 35	CT08BF26



AURORA GLAZED
Clear safety glass

Height/Width/ Thickness mm	Product Code
1981 762 35	CAUR26



ANTIGUA

Height/Width/ Thickness mm	Product Code
1981 610 35	CAN T120
1981 685 35	CAN T123
1981 762 35	CAN T126
1981 838 35	CAN T129

PRIMED FIRE DOORS
1981 685 66 CAN T123F030
1981 762 66 CAN T126F030
1981 838 66 CAN T129F030



ANTIGUA BI-FOLD**

Height/Width/ Thickness mm	Product Code
1981 762 35	CAN T1BF26

**Please note that the door opening sizes are listed and that the actual bi-folds supplied are slightly smaller to accommodate tracking.



JAMAICA



MONTERRAT



Rebated Door Pairs can be ordered from stock with a short lead time. See page 12



Calypso doors are perfect painted white but why not try adding a touch of colour – light grey is very popular.

Save space with one of our bi-fold options, ideal for wardrobes and en-suites. Calypso Bi-fold doors are easy to install into existing frames, supplied ready hinged with pivots, brackets and a sliding track.



JAMAICA



TRINIDAD
Clear safety glass



BARBADOS



DOMINICA
Clear safety glass



MONTERRAT



MONTERRAT BI-FOLD**



CAYMAN
Clear safety glass



CAYMAN BI-FOLD**
Clear safety glass

Add the finishing touch with a latch pack, see page 75.



Height/Width/ Thickness mm	Product Code
PRIMED	
1981 610 35	CJAM20
1981 686 35	CJAM23
1981 762 35	CJAM26
1981 838 35	CJAM29
PRIMED FIRE DOORS	
1981 686 66	CJAM23FD30
1981 762 66	CJAM26FD30
1981 838 66	CJAM29FD30

Height/Width/ Thickness mm	Product Code
PRIMED	
1981 686 35	CTRI23
1981 762 35	CTRI26
1981 838 35	CTRI29
PRIMED FIRE DOORS	
1981 686 66	CTRI23FD30
1981 762 66	CTRI26FD30
1981 838 66	CTRI29FD30

Height/Width/ Thickness mm	Product Code
PRIMED	
1981 610 35	CBAR20
1981 686 35	CBAR23
1981 762 35	CBAR26
1981 838 35	CBAR29
PRIMED FIRE DOORS	
1981 686 66	CBAR23FD30
1981 762 66	CBAR26FD30
1981 838 66	CBAR29FD30

Height/Width/ Thickness mm	Product Code
PRIMED	
1981 686 35	CDOM23
1981 762 35	CDOM26
1981 838 35	CDOM29
PRIMED FIRE DOORS	
1981 686 66	CDOM23FD30
1981 762 66	CDOM26FD30
1981 838 66	CDOM29FD30

Height/Width/ Thickness mm	Product Code
PRIMED	
1981 610 35	CMON20
1981 686 35	CMON23
1981 762 35	CMON26
1981 838 35	CMON29
PRIMED FIRE DOORS	
1981 686 66	CMON23FD30
1981 762 66	CMON26FD30
1981 838 66	CMON29FD30

Height/Width/ Thickness mm	Product Code
PRIMED	
1981 762 35	CMONBF26
PRIMED FIRE DOORS	
1981 762 66	CMONBF26FD30

Height/Width/ Thickness mm	Product Code
PRIMED	
1981 686 35	CCAY23
1981 762 35	CCAY26
1981 838 35	CCAY29
PRIMED FIRE DOORS	
1981 686 66	CCAY23FD30
1981 762 66	CCAY26FD30
1981 838 66	CCAY29FD30

Height/Width/ Thickness mm	Product Code
PRIMED	
1981 762 35	CCAYBF26
PRIMED FIRE DOORS	
1981 762 66	CCAYBF26FD30

**Please note that the door opening sizes are listed and that the actual bi-folds supplied are slightly smaller to accommodate tracking.

White Moulded

- New designs for 2016
- White primed, ready for top coat finish
- FD30 fire doors for solid and selected glazed models
- FSC® chain of custody certified



RIPPLE
shown with light grey painted finish

A stylish collection of modern and traditional moulded panel doors, supplied white primed ready for a choice of paint finish. You will be impressed by the quality of these affordable doors.

Exclusive to JB Kind and new for 2016, our Ripple door offers a stunning textured effect that really creates the Wow factor. Perfect for painting a contemporary colour, you will love the price of these modern doors.

White Moulded doors are especially vulnerable to constant high humidity and care must be taken not to fit in new properties before plasterwork etc. has been allowed to dry out sufficiently.



Useful Tip:

When finishing a primed glazed door, ensure that the paint and peel protective film is kept in place, until the door is completely dry.



NEW RIPPLE
Textured effect

Height/Width/ Thickness mm	Product Code
1981 610 35	RIP20
1981 686 35	RIP23
1981 762 35	RIP26
1981 838 35	RIP29
PRIMED FIRE DOORS	
1981 686 65	RIP23F030
1981 762 65	RIP26F030
1981 838 65	RIP29F030



NEW RIPPLE GLAZED
Textured effect, Flush beading,
Clear safety glass

Height/Width/ Thickness mm	Product Code
1981 686 35	RIP23G
1981 762 35	RIP26G
1981 838 35	RIP29G



QUATTRO
Smooth

Height/Width/ Thickness mm	Product Code
1981 610 35	QUA20
1981 686 35	QUA23
1981 762 35	QUA26
1981 838 35	QUA29
PRIMED FIRE DOORS	
1981 686 65	QUA23F030
1981 762 65	QUA26F030
1981 838 65	QUA29F030



QUATTRO GLAZED
Smooth, Flush beading,
Clear safety glass

Height/Width/ Thickness mm	Product Code
1981 686 35	QUA23G
1981 762 35	QUA26G
1981 838 35	QUA29G



DECCA
Grained, Clear safety glass with
etched lines, Flush beading

Height/Width/ Thickness mm	Product Code
1981 686 35	DEC23
1981 762 35	DEC26
1981 838 35	DEC29



COTTAGE 1 LIGHT
Grained, Clear safety glass with
etched lines, Flush beading

Height/Width/ Thickness mm	Product Code
1981 686 35	MCOT51L23
1981 762 35	MCOT51L26
1981 838 35	MCOT51L29



COTTAGE 5
Grained

Height/Width/ Thickness mm	Product Code
1981 610 35	MCOT5 20
1981 686 35	MCOT5 23
1981 762 35	MCOT5 26
1981 838 35	MCOT5 29
PRIMED FIRE DOORS	
1981 686 65	MCOT5 23F030
1981 762 65	MCOT5 26F030
1981 838 65	MCOT5 29F030



CAPRICE
Grained

Height/Width/ Thickness mm	Product Code
1981 610 35	CAP20
1981 686 35	CAP23
1981 762 35	CAP26
1981 838 35	CAP29
2040 726 60	CAP7 26
2040 826 60	CAP8 26
PRIMED FIRE DOORS	
1981 762 65	CAP26F030
1981 838 65	CAP29F030
2040 726 65	CAP7 26F030
2040 826 65	CAP8 26F030



ANDORRA
Grained, Etched safety glass
Flush beading

Height/Width/ Thickness mm	Product Code
1981 686 35	CAPAN023
1981 762 35	CAPAN026
1981 838 35	CAPAN029

White Moulded
continues overleaf



QUATTRO



DECIMA
Grained
Clear bevelled safety glass

Height/Width/
Thickness mm Product
Code

PRIMED		
1981 686 35	CCAPDEC23	
1981 762 35	CCAPDEC26	
1981 838 35	CCAPDEC29	

Brushed chrome coming
glazing cassette.



FARO
Grained, Clear safety glass
Flush beading

Height/Width/
Thickness mm Product
Code

PRIMED		
1981 686 35	CAJFAR23	
1981 762 35	CAJFAR26	
1981 838 35	CAJFAR29	

PRIMED FIRE DOOR (see table to the left)
1981 762 66 CAJFAR26FD30
1981 838 66 CAJFAR29FD30



CANTERBURY BI-FOLD**
Grained

Height/Width/
Thickness mm Product
Code

PRIMED		
1981 610 35	CANBF20	
1981 762 35	CANBF26	



COLONIST BI-FOLD**
Grained

Height/Width/
Thickness mm Product
Code

PRIMED		
1981 762 35	COLBF26	
1981 916 35	COLBF30	



CANTERBURY
Grained or Smooth

Height/Width/
Thickness mm Product
Code

PRIMED GRAINED		
1981 657 35	CAN16*	
1981 533 35	CAN19*	
1981 610 35	CAN20	
1981 686 35	CAN23	
1981 711 35	CAN24	
1981 762 35	CAN26	
1981 838 35	CAN29	
2032 813 35	CAN28	
2060 526 60	CAN526	
2060 626 60	CAN626	
2060 726 60	CAN726	
2060 826 60	CAN826	

PRIMED GRAINED FIRE DOORS

1981 610 66	CANHH20	
1981 686 66	CANHH23	
1981 762 66	CANHH26	
1981 838 66	CANHH29	
2032 813 66	CANHH28	
2060 726 66	CANHH26	
2060 826 66	CANHH26	
2060 926 66	CANHH26	

PRIMED SMOOTH

1981 610 35	SMCAN20	
1981 686 35	SMCAN23	
1981 762 35	SMCAN26	
1981 838 35	SMCAN29	

PRIMED SMOOTH FIRE DOORS

1981 610 66	SMCANHH20	
1981 686 66	SMCANHH23	
1981 762 66	SMCANHH26	
1981 838 66	SMCANHH29	
2032 813 66	SMCANHH28	

*2 Panel



COLONIST
Grained or Smooth

Height/Width/
Thickness mm Product
Code

PRIMED GRAINED		
1981 381 35	COL13**	
1981 657 35	COL16**	
1981 533 35	COL19**	
1981 610 35	COL20	
1981 686 35	COL23	
1981 711 35	COL24	
1981 762 35	COL26	
1981 838 35	COL29	
2032 813 35	COL28	
2060 526 60	COL526	
2060 626 60	COL626	
2060 726 60	COL726	
2060 826 60	COL826	

PRIMED GRAINED FIRE DOORS

1981 610 66	COLHH20	
1981 686 66	COLHH23	
1981 762 66	COLHH26	
1981 838 66	COLHH29	
2032 813 66	COLHH28	
2060 726 66	COLHH26	
2060 826 66	COLHH26	
2060 926 66	COLHH26	

PRIMED SMOOTH

1981 657 35	SMCOL16**	
1981 533 35	SMCOL19**	
1981 610 35	SMCOL20	
1981 686 35	SMCOL23	
1981 762 35	SMCOL26	
1981 838 35	SMCOL29	
2032 813 35	SMCOL28	

PRIMED SMOOTH FIRE DOORS

1981 686 66	SMCOLHH23	
1981 762 66	SMCOLHH26	
1981 838 66	SMCOLHH29	
2032 813 66	SMCOLHH28	

**3 Panel



FARO FD30
Grained, clear
etched fire glass,
Raised beading



CLASSIQUE
Grained

Height/Width/
Thickness mm Product
Code

PRIMED		
1981 533 35	CLA19	
1981 610 35	CLA20	
1981 686 35	CLA23	
1981 711 35	CLA24	
1981 762 35	CLA26	
1981 838 35	CLA29	
2032 813 35	CLA28	
2060 726 60	CLA726	
2060 826 60	CLA826	

PRIMED FIRE DOORS

1981 686 66	CLAHH23	
1981 762 66	CLAHH26	
1981 838 66	CLAHH29	



CLASSIQUE BI-FOLD**
Grained

Height/Width/
Thickness mm Product
Code

PRIMED		
1981 610 35	CLABF20	
1981 762 35	CLABF26	

**Please note that the door
opening sizes are listed and
that the actual bi-folds
supplied are slightly smaller
to accommodate the track.



CLASSIQUE 6 LT
Grained, Clear safety glass
Flush beading

Height/Width/
Thickness mm Product
Code

PRIMED		
1981 686 35	CLAGLS23	
1981 762 35	CLAGLS26	
1981 838 35	CLAGLS29	
2032 813 35	CLAGLS28	

PRIMED PAIRS

1981 1220 35	CLAGLSPR40	
--------------	------------	--

CLASSIQUE 6 LT PAIRS

1981 762 66	EDHH26	
1981 838 66	EDHH29	
2032 813 66	EDHH28	



EDWARDIAN
Grained

Height/Width/
Thickness mm Product
Code

PRIMED		
1981 533 35	ED19	
1981 610 35	ED20	
1981 686 35	ED23	
1981 762 35	ED26	
1981 838 35	ED29	
2032 813 35	ED28	

PRIMED FIRE DOORS

1981 762 66	EDHH26	
1981 838 66	EDHH29	
2032 813 66	EDHH28	



EDWARDIAN 2 LT
Grained, Etched safety glass
Flush beading

Height/Width/
Thickness mm Product
Code

PRIMED		
1981 686 35	EDDL523	
1981 762 35	EDDL526	
1981 838 35	EDDL529	



CANTERBURY 2 LT FD30
Grained, clear fire glass
Raised beading

Height/Width/
Thickness mm Product
Code

PRIMED GRAINED FIRE DOORS		
1981 762 66	CANGL26FD30	
1981 838 66	CANGL29FD30	



CANTERBURY 2 LT
Grained with etched safety glass
or Smooth with clear safety
glass, Flush beading

Height/Width/
Thickness mm Product
Code

PRIMED GRAINED - ETCHED		
1981 686 35	CANGL23	
1981 762 35	CANGL26	
1981 838 35	CANGL29	
2032 813 35	CANGL28	
2060 726 60	CANGL726	

PRIMED SMOOTH - CLEAR

1981 686 35	SMCANGLC23	
1981 762 35	SMCANGLC26	
1981 838 35	SMCANGLC29	



**CANTERBURY
GLAZED BI-FOLD****
Grained, Etched safety glass
Flush beading

Height/Width/
Thickness mm Product
Code

PRIMED		
1981 762 35	CANBFLT26	

White Moulded Bi-fold doors are easy to install
into existing frames, supplied ready hinged
with pivots, brackets and a sliding track.

Door Furniture



Stylish Latch Packs – the perfect partner for your JB Kind doors

Enjoy the convenience of a JB Kind latch pack, supplied with everything that you need to fit your door in one box.

More choice – we've introduced three new lever handle designs for 2016, perfect additions to our stylish collection of door furniture.

Each pair of handles comes with a smartlatch, a choice of keeps and three quality stainless steel ball bearing hinges. The time saving advantage of a smartlatch is a real plus point, as less cutting out of the door is required. Privacy latch packs are also available, perfect for locking bathroom doors safely and securely. The revolutionary push button lever handle and privacy smartlatch, means that there is no requirement to purchase or fit a separate bathroom lock.

SMARTLATCH

The Smartlatch is a new innovative latch that can be quickly installed in less than 5 minutes, saving tradesmen up to 25 minutes per door.

Privacy latch packs with revolutionary push button, available in all handle styles



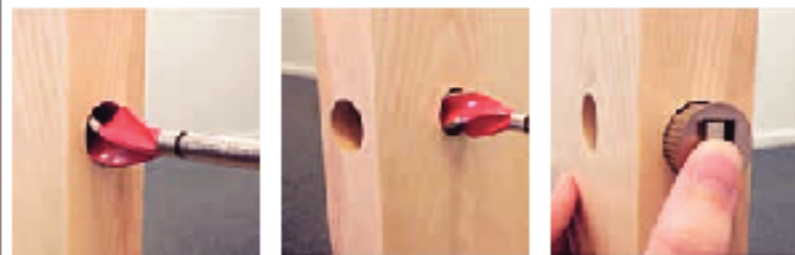
With a 10 year parts and mechanism guarantee, the premium stainless steel and zinc diecast construction provides that all important peace of mind.

Please note: the hinges provided in our latch packs are not suitable for use with fire doors. Fire door hinges are available separately, call 01283 554197 for details.

Smartlatch: Fit in under five minutes



Step one: Using a 25mm drill bit, bore out to 75mm in depth. **Step two:** Using the same bit, drill the hole for the spindle. **Step three:** Then simply insert the latch.

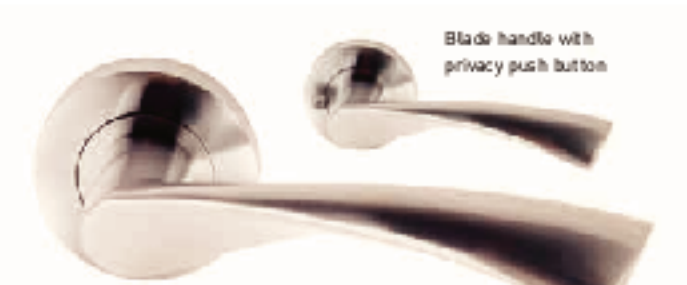


Latch Pack = x2 + x3 +



NEW ROLLER
Polished and satin chrome finish

STANDARD LATCH PACK: IR0LLP
PRIVACY LATCH PACK: IR0LPP



NEW BLADE
Satin chrome finish

STANDARD LATCH PACK: ISBLAP
PRIVACY LATCH PACK: ISBLPP



NEW WAVE
Polished chrome finish

STANDARD LATCH PACK: IWAVLP
PRIVACY LATCH PACK: IWAVPP



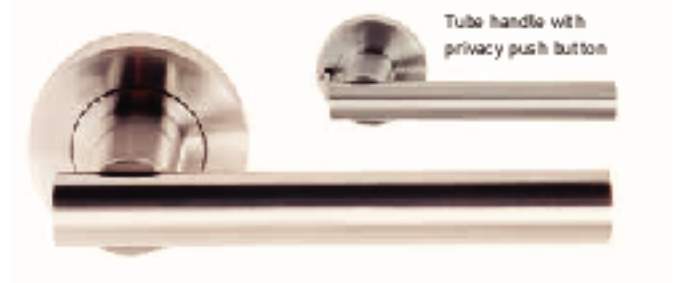
DRIFT
Polished chrome and satin nickel finish

STANDARD LATCH PACK: IDRILP
PRIVACY LATCH PACK: IDRIPP



CURL
Polished chrome and satin nickel finish

STANDARD LATCH PACK: ICURLP
PRIVACY LATCH PACK: ICURPP



TUBE
Satin chrome finish

STANDARD LATCH PACK: ITUBLP
PRIVACY LATCH PACK: ITUBPP

Internal Accessories

Oak Door Linings, Architraves and Skirtings - Boxed Sets

Constructed with a solid engineered core for added stability and faced with oak veneer. Each set is sufficient for most standard door sizes, available both varnished and unvarnished.



LININGS

Size (mm)	Varnished	Unvarnished
30 x 108	ODL108V	ODL108
30 x 133	ODL133V	ODL133

Each pack is sufficient for a single door

Contents per box:

2 pieces 2100mm - Jambas

1 piece 1050mm - Head

Steps - 12 x 45mm, 2 pieces 2100mm, 1 piece 1050mm



ARCHITRAVES

Size (mm)	Varnished	Unvarnished
18 x 69	OARC69V	OARC69

Each pack is sufficient for both sides of one door

Contents per box:

4 pieces 2200mm

2 pieces 1200mm lengths



SKIRTING

Size (mm)	Varnished	Unvarnished
18 x 166	OSK166V	OSK166

Contents per box:

4 pieces 3000mm lengths

Modern Architrave

The perfect complement for your doors. Veneered on MDF and supplied with sufficient lengths to fit both sides of most standard internal door sizes.



MODERN ARCHITRAVE

Size (mm)	Varnished	Unvarnished
-----------	-----------	-------------

ARCHITRAVES

(Box quantity for 2 sides a single leaf)

	OCLRA70V	OCLRA70
--	----------	---------

Contents per box:

4 pieces 2200mm - Jambas 70 x 20mm

2 pieces 1100mm - Heads 70 x 10mm

Sovereign Sets

The ultimate embellishment for enhancing oak or painted internal doors in both unfinished and prefinished oak, veneered on MDF.



Each box contains sufficient for one side of a door and includes 2 jambas, 1 head, 2 corner blocks and 2 plinth blocks.

We offer two different head sizes to suit both single leaves and pairs.

ARCHITRAVE SETS

Size (mm)	Product Code
-----------	--------------

VARNISHED

1100	RPS0V011
1800	RPS0V022

UNVARNISHED

1100	RPS0V011-OU
1800	RPS0V022-OU

Pair Maker

Oak style T-section pair maker, available for both standard and metric width doors.



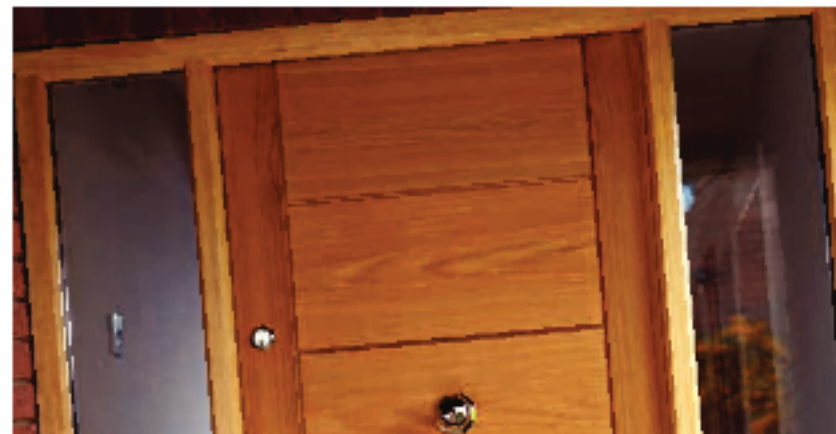
PAIR MAKER

Size (mm)	Product Code
-----------	--------------

UNVARNISHED

2100mm	OPRMAKER07 (to suit 35mm door)
2100mm	OPRMAKER02 (to suit 60mm door)

External Accessories



Great value external door frame kits, manufactured using solid oak (unfinished). Laminated construction for extra stability and material economy without losing authenticity.

Lengths supplied are sufficient for most standard door sizes, including a version for pair or sidelight configurations (ODF9457W). A separate boxed mullion is available where a rebate both sides is required for sidelights (OML9468). All components require cutting to size.

Draught strips are included, reversible open in or out. Suitable for use externally but it is essential that complete shelter from direct rain and hot sunshine is provided if appearance and performance is to be maintained. Full treatment with a quality external wood finish is required.



Weather boards

A weatherboard is an essential requirement wherever doors are exposed to rain fall.

OAK WEATHERBOARD

Size (mm)	Timber	Product Code
915	Oak	WB029



DOOR FRAMES



MULLION

Size (mm)	Product Code
-----------	--------------

94x57 single leaf frame

ODF9457

Contents per box:

2 pieces 2100mm,

1 piece 1050mm, Jambas and Head (including draught strip)

1 piece 1050mm, 132mm x 28mm CIL,

1 piece 1050mm, 17mm x 26mm CIL Converter

94x57 double leaf frame

ODF9457W

Contents per box:

3 pieces 2100mm, Jambas and Head (including draught strip)

1 piece 2100mm, 132mm x 28mm CIL,

1 piece 2100mm, 17mm x 26mm CIL Converter

94x68 mullion

OML9468

Contents per box:

1 piece 2100mm Mullion (including draught strip)

Glossary of Terms

ARCHITRAVE: A decorative moulding that surrounds the door, and bridges the gap between the edge of the frame and the wall.

APERTURE: An opening in a door where glass would be fitted.

BEADING: The mouldings that surround a panel in a solid door, or a pane of glass in a door.

BESPOKE DOORS: Doors that are tailor-made to meet individual requirements. Choosing an alternative to the stock doors from the brochure allows clients to request special sizes and alternative designs to match their specific needs.

BI-FOLD: These are doors that fold together as they open to save space, using a tracking system that enables the door to slide into position. Bi-folds are particularly suitable for smaller spaces and can also be installed as a pair to create a room divider.

CERTIFIRE: An independent, audited process to ensure that Fire Doors are manufactured to specific standards.

CORE CONSTRUCTION: The internal composition of a door.

DOOR PAIRS: Two doors installed adjacent to each other and modelled to form a pair of doors, creating double the size of opening of an individual door.

FD30 FIRE DOORS: Doors that have been tested by an accredited test house to ensure that they are able to resist the passage of fire for more than 30 minutes. Likewise, FD60 fire doors will last at least 60 minutes.

FINISH: The surface of the door. Doors can be supplied finished, (usually with a clear lacquer or paint), or unfinished/natural (where you are able to apply your own finish).

FLAT PANEL: This is a panel on a door which is not

raised, bevelled or profiled.

FRAME: The timber components (e.g. linings and casings) that are fitted within a wall opening to which a door is fixed.

FSC®: The Forest Stewardship Council is an independent organisation that promotes the responsible management of forests worldwide. The FSC standard is recognised globally.

HANDING: Predominantly referring to door pairs, it describes which door in the pair opens first. E.g. RHA (right hand away) or LHA (left hand away)

INLAY: A decorative strip, design or pattern which is embedded into the face of the door. Typically the inlay is made of a complementary material or alternative colour to the door, like a veneer or coloured plastic, and it is flush with the door's surface.

INSERT: Similar to an inlay but usually slightly thicker and it may not be flush with the door's face (front of the door).

LATCH PACKS: These packs contain everything you need to fit your door including handles, hinges and a latch mechanism.

LIGHT: This refers to an individual pane of glass within a door e.g. a "2 light" door has two panes of glass.

LININGS/CASINGS: Another name for an internal door frame.

LIPPING: These create the door edge and can be reduced slightly in size to fit a specific door opening, without exposing the inner core of the door. Solid lippings (as long as they are large enough) allow the edges of doors to be modelled to form rebated pairs.

MULLION: This is required when fitting an external door with a sidelight.

For a more detailed glossary visit www.jbkind.com

PAIR MAKER: A timber moulding that is shaped to fit on a door edge to easily create a door pair.

POCKET DOOR SYSTEM: This is a sliding door system that is built into the wall, so that the door disappears on opening completely into the pocket. A popular, contemporary door solution that is ideal for properties with limited space.

PRIMED: Doors that have been prepared with an undercoat ready for a top coat finish.

REBATING: This makes doors into a pair, by machining a groove into the edges of two doors, creating a partial overlap where the doors meet.

SAFETY GLASS: Glass that is treated so that, should it break, it does not create sharp shards. All of JB Kind's pre-glazed doors comply with building regulations and meet European standards.

SEMI-SOLID CORE: The centre of the door is part solid and part cellular components.

SIDELIGHT: A panel which is usually fixed at the side of a hinged door. A sidelight is normally a narrow panel of glass set alongside a larger door.

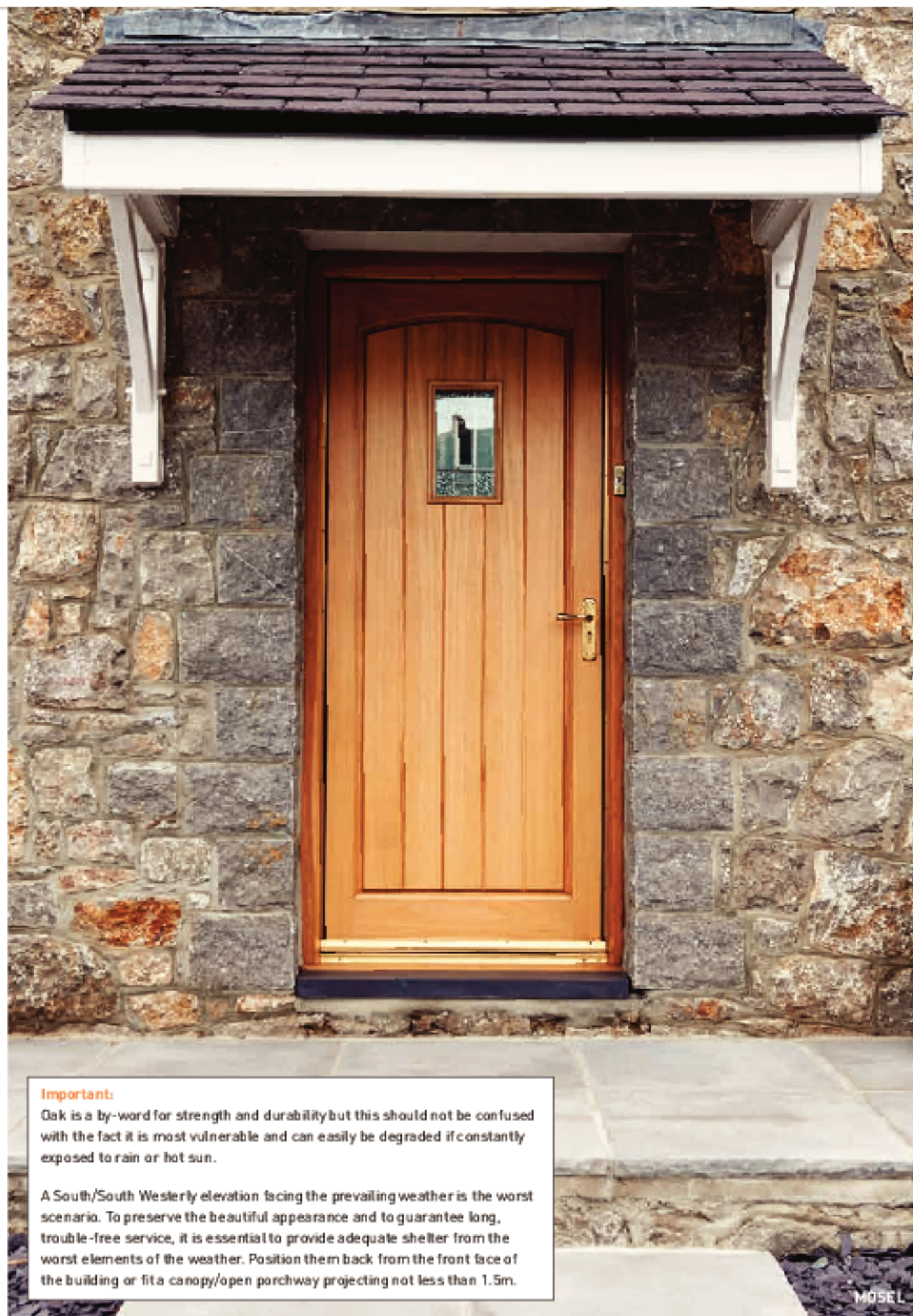
SOLID CORE: A heavy and solid centre to a door, it is normally made from wood-based timber components.

STANDARD CORE: Standard core doors have a cellular structure inside the door. This means that the door is lighter in weight than solid or semi-solid core doors and is well suited to domestic use.

STILE: This refers to the side of the door. Specific terms are hanging stile (hinge side), leading stile (side that opens into a room) and meeting stile (door pairs).

VENEER: A thin slice of timber used as a decorative material on the visible face of the door.

Therm-L Exterior



Important:

Oak is a by-word for strength and durability but this should not be confused with the fact it is most vulnerable and can easily be degraded if constantly exposed to rain or hot sun.

A South/South Westerly elevation facing the prevailing weather is the worst scenario. To preserve the beautiful appearance and to guarantee long, trouble-free service, it is essential to provide adequate shelter from the worst elements of the weather. Position them back from the front face of the building or fit a canopy/open porchway projecting not less than 1.5m.

MOSEL



- Oak faced external doors
- Part 'L' compliant
- Prepared ready to finish
- Solid core construction

First impressions count and by fitting an oak exterior door to your home, you will certainly be adding style and distinction.

The beautiful real oak facings of our Therm-L range are prepared ready for your preferred varnish finish. Constructed with a solid composite core that incorporates insulating properties, the doors are compliant to Part 'L' of the building regulations - meeting the thermal 'U' (1.8w/m2k) value criteria for new build.

Supplied fitted with insulated glazing units that truly enhance the beauty of the doors. To achieve full thermal insulation properties, the glazed panels have an external face marked upon each door. For this reason, when glass panels are offset, it is necessary to specify left or right as viewed from outside.

Matching sidelights can be reduced from 2057 to 1981mm and 457 to 356mm to fit, if secured in framing. Please note that they are not designed for use as opening doors.



LOIRE
Shown as right hand
(State hand required)
U' Value 1.7
Clear bevelled safety glass

Height/Width/ Thickness mm	Product Code
UNFINISHED	
1981 838 66	OTL02%L-L
1981 838 66	OTL02%L-R



ALSACE
Shown as left hand
(State hand required)
U' Value 1.7
Clear bevelled safety glass

Height/Width/ Thickness mm	Product Code
UNFINISHED	
1981 762 66	OTAL52%L-L
1981 762 66	OTAL52%L-R
1981 838 66	OTAL52%L-L
1981 838 66	OTAL52%L-R



COGNAC
U' Value 1.5

Height/Width/ Thickness mm	Product Code
UNFINISHED	
1981 838 66	OTC0029



RHONE SIDELIGHT
U' Value 1.9
Clear bevelled safety glass

Height/Width/ Thickness mm	Product Code
UNFINISHED	
2057 457 66	OTRH016

BORDEAUX
U' Value 1.6
Clear bevelled safety glass

Height/Width/ Thickness mm	Product Code
UNFINISHED	
1981 762 66	OTBOR26
1981 838 66	OTBOR27
2032 813 66	OTBOR28

All images are shown finished for illustrative purposes only.

Timber veneers are a natural material and variations in the colour and graining should be expected. Colours depicted are representative only.

Therm-L Exterior continues over leaf

Therm-L Exterior continued



BURGUNDY AND PIEDMONT SIDELIGHT



LOIRE

All images are shown finished for illustrative purposes only.

Timber veneers are a natural material and variations in the colour and graining should be expected. Colours depicted are representative only.



Important:

Oak is a by-word for strength and durability but this should not be confused with the fact it is most vulnerable and can easily be degraded if constantly exposed to rain or hot sun.

A South/South Westerly elevation facing the prevailing weather is the worst scenario. To preserve the beautiful appearance and to guarantee long, trouble-free service, it is essential to provide adequate shelter from the worst elements of the weather. Position them back from the front face of the building or fit a canopy/open porchway projecting not less than 1.5m.



ULLSWATER
U Value 1.7

Height/Width/ Thickness mm	Product Code
UNFINISHED	
1981 838 66	OUUL29



WINDERMERE
U Value 1.7
Obscure sandblasted glass

Height/Width/ Thickness mm	Product Code
UNFINISHED	
1981 838 66	OWIN29



CONISTON
U Value 1.7
Obscure sandblasted glass

Height/Width/ Thickness mm	Product Code
UNFINISHED	
1981 838 66	OCON29



NORFOLK
U Value 1.5
Clear glass with black lead cappings

Height/Width/ Thickness mm	Product Code
UNFINISHED	
1981 838 66	OTNOR29



BURGUNDY
U Value 1.7
Obscure and clear glass with zinc cappings

Height/Width/ Thickness mm	Product Code
UNFINISHED	
1981 838 66	OTBUR29



MOSEL
U Value 1.5
Obscure and clear glass with zinc cappings

Height/Width/ Thickness mm	Product Code
UNFINISHED	
1981 838 66	OTMOS29



**PIEDMONT
SIDELIGHT**
U Value 1.9
Obscure and clear glass with zinc cappings

Height/Width/ Thickness mm	Product Code
UNFINISHED	
2057 657 66	OPIE16



RIOJA
U Value 1.7
Obscure and clear glass with zinc cappings

Height/Width/ Thickness mm	Product Code
UNFINISHED	
1981 838 66	OTRIO29

Essential Door Care & Maintenance Advice

The principal enemy of timber doors is excess exposure to moisture or dryness. Having left our custody, we have no control over the conditions to which they are subjected and to avoid any subsequent cause for disappointment, we strongly advise the following advice is heeded. If suitable care and treatment is not taken to prevent the free passage of moisture either into or out of the wooden door, stresses within timber may be released resulting in movement or distortions such as swelling, shrinking, warping, splitting, twisting or overdiscolouration. We are unable to accept any liability for any failings where they have arisen due to the free passage of moisture.

Storage

Upon receipt, check your doors carefully for condition and suitability, as claims made later may not be considered. Please store doors laid flat, fully supported off the floor with at least three full width bearers of the same dimension in a dry fully ventilated area, with protective packaging intact. Doors supplied unfinished should be thoroughly sealed on all faces and edges prior to the commencement of any joinery work, although first sizing them may be to advantage.

Wood finishes

There are numerous brands on the market and we fear many are formulated to achieve a low market price rather than quality. Be sure to select one to provide a lasting seal between component parts. Avoid the use of water based finishes, using only good quality solvent based finishes that have recognised sealing properties, ensuring that it is fit for purpose for the situation and conditions in which your door is to be fitted.

Follow the manufacturer's instructions carefully and we recommend keeping a copy of the claims made for the product in the event it fails to perform. It is vital all finishing systems are applied equally to both sides and edges at the same time. Rapid changes in ambient moisture are extremely detrimental especially when unbalanced.

Natural oils such as Danish oil, tung oil and linseed oil are not suitable for use with any of our products. These solutions are penetrating oils and are not suitable for use with veneered doors. The application of a base coat stain or

paint primer alone is not deemed to form a seal. Failures related to treatment will be assessed based on their application and the claims made by their manufacturer.

Installation

Check the door for suitability prior to commencing work. Claims made later may not be considered. When trimming doors, reduce them equally and not excessively from the top and bottom for height, to the hanging edge only for the width, if minimal, but equally with the meeting edge if a greater amount is necessary.

Recesses for hinges (3 No. 75mm internal, 3 No. 100mm external) and mortises for latch / locks etc. should be cut to the minimum recommended sizes. Panel door mortises should not be located at rail joints as this may significantly weaken them. On completion remove doors, taking off all ironmongery and treat every cut / untreated surface liberally with a number of coats of an appropriate treatment before finally refitting. Remember to pay particular attention to all edges of your door, particularly any exposed end grain where the propensity for the free passage of moisture is much greater.

Installation - Fire doors

When fitting our FD30 fire doors, please note that there are strict limitations about how much they can be trimmed and these must not be exceeded. Ironmongery used in the installation of fire doors must be strictly in accordance with the door's certification and appropriate for use with a fire door.

Internal door specific

We strongly advise against the installation of all types of timber doors into a building with recent plastered or screeded areas. Wet sites with enclosed unheated buildings represent extremely detrimental environments and must be thoroughly dry, without condensation, before doors are introduced. Even our pre-finished doors should not be exposed to inappropriate damp site conditions.

External door specific

Even in times past, it was never advisable or intended that timber entrance doors be fully exposed to the worst elements of our climate, even if well coated. A South / South Westerly



elevation is the worst direction for the prevailing weather and exposure to the hottest sun which can seriously degrade external doors.

We recommend they are set back from the front face of the building or covered by a canopy or porch way projecting not less than about 1.5m, regardless of elevation. Always fit with a suitable weatherboard regardless of frame cill type fitted, to prevent droplets of moisture hanging from the door bottom.

Future maintenance is most important to retain good appearance over many years and we recommend washing down with warm water and detergent every two to three years and re-coating.

Quality standards

All external and internal doors are supplied in accordance with BS EN 942:2007 "Timber in Joinery - General Classification of Timber Quality", BS 5278:1976/EN25:1975 "Doors - measurement of Dimensions and of Defects of Squareness of Door Leaves" and BS EN 951:1999 "Door leaves. Method for measurement of height, width, thickness and squareness".

Any claims against warranty relating to manufacture will be assessed strictly in accordance with the criteria contained within.

Any claims against warranty relating to storage, handling or installation of any of our doors will be assessed against guidelines contained within BS8000 part 5:1990 and British Standard Code of Practice CP151. JB Kind Terms and Conditions of Trading apply.

Safety Glass

To comply with building regulations all our pre-glazed doors meet the requirements of the European standards.

Variations

Wood is a natural material and variations in colour should be expected. Colours depicted are representative only and are reproduced as accurately as the printing process will allow. We reserve the right to make alterations or modify specifications without notice. Errors and omissions excepted.

Where to buy our doors

Our doors can be ordered from Builders Merchants and Door Retailer partners across the UK and buying your JB Kind doors is now even easier with our online Supplier Locator. Just go to www.jbkind.com and put in your postcode to find the closest retailer to you - we also tell you which outlets have JB Kind door displays so you can take the time to go and experience just how fabulous our doors really are!

If you already know exactly what you want and you like the ease of ordering online, then just pop onto the website and check out the buy online section with links to our approved Online Partners - then you're just a click away from receiving your dream doors.

Sometimes you'll need advice and we are always here to help. Just give us a call on 01283 554 197 or email info@jbkind.com.



Visit our Showroom



Located in Swadlincote, Derbyshire, you are invited to touch and feel our products at first hand - we're sure you'll be impressed. With over 70 doors on display, you can view doors from our standard stock ranges, as well as alternative designs that showcase our bespoke service.

Please call 01283 554 197 to make an appointment. Alternatively, we have many partners throughout the UK with JB Kind doors on display, so please consult us for the closest to you or visit our online supplier locator.



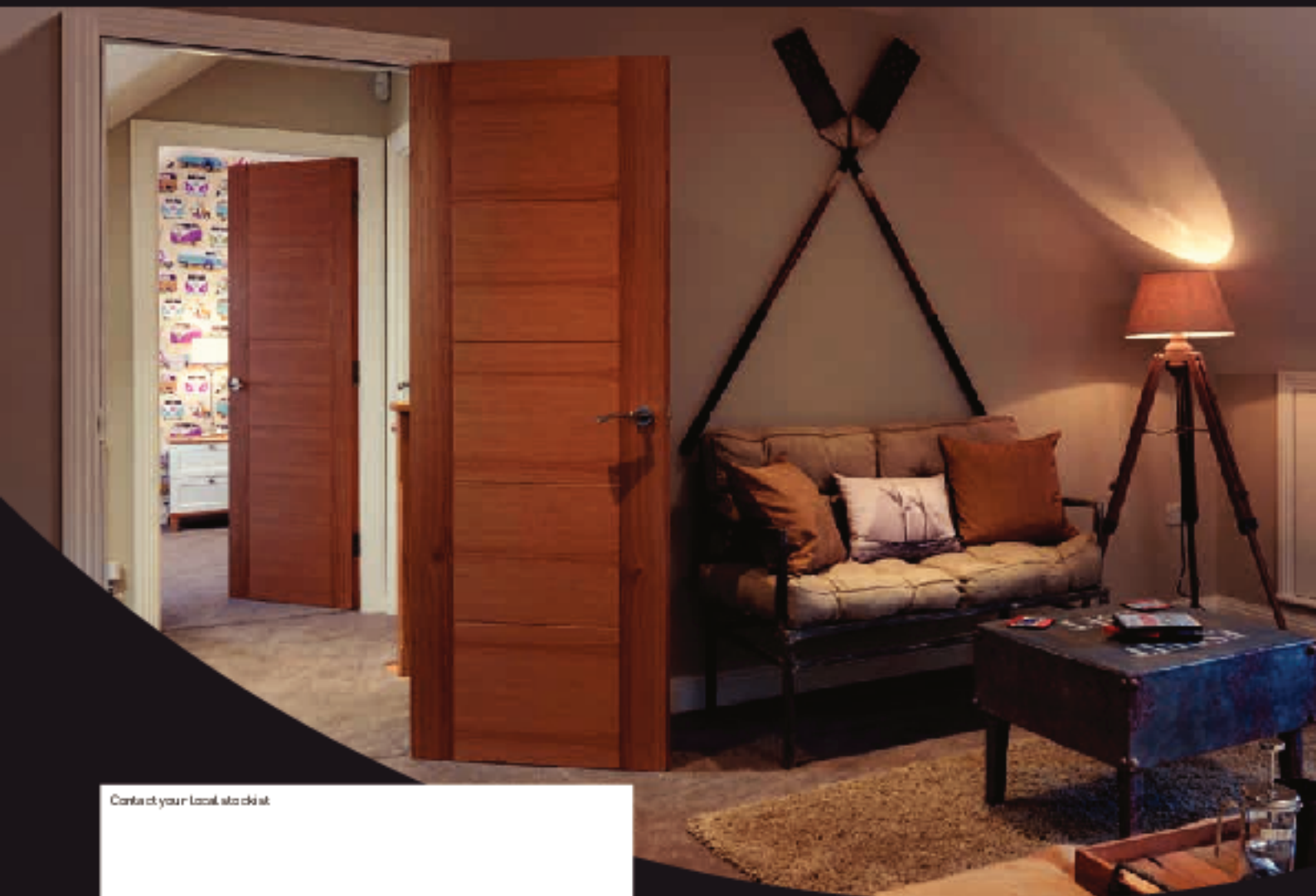


www.jbkind.com

INSPIRATIONAL DOORS.
Undeniable value.

JB Kind Limited
Portal Place, Astron Business Park
Hearthcote Road, Swadlincote,
Derbyshire DE11 9DW
T: 01283 554197
F: 01283 554182
E: info@jbkind.com

SCAN WITH YOUR
SMARTPHONE



Contact your local stockist

